

Professional Surveillance Software User's Manual

Version 4.0.0

Table of Contents

1	OVERVIEW AND ENVIRONMENT	7
1.1	Overview	7
1.2	Environment	7
2	INSTALLATION AND UPGRADE	8
2.1	Installation.....	8
2.2	Un-installation	11
2.2.1	Windows Menu.....	11
2.2.2	Start Menu	12
2.2.3	Resource CD	12
2.3	Upgrade	12
2.3.1	Software of the same version.....	12
2.3.2	Software of different version	14
3	INTERFACE.....	15
3.1	Login Interface	15
3.2	Initialization Interface	15
3.3	Main Interface	16
3.4	Interface Button.....	18
3.5	Video Control Zone	18
3.6	Screen Display Mode.....	19

3.7	Function Button.....	19
3.7.1	Task	19
3.7.2	Alarm.....	19
3.7.3	Playback.....	20
3.7.4	E-map	22
3.7.5	Configuration	23
3.7.5.1	Password Modification.....	23
3.7.5.2	Option.....	23
3.8	Right Tool Bar	25
3.8.1	Device List	26
3.8.2	PTZ Direction Control.....	26
3.8.3	PTZ Advanced.....	27
3.8.4	Tool.....	29
3.8.4.1	Begin/Stop record plan	29
3.8.4.2	NVD Control	29
3.8.4.3	Health Report.....	31
3.8.4.4	Color	32
3.8.4.5	Volume.....	32
3.8.5	Setting Manage	32
3.8.5.1	Scheme and Task (Task and Project).....	32
3.8.5.2	Record Plan Configuration.....	35
3.8.5.3	Alarm Manage.....	37
3.8.5.4	E-map.....	40
3.8.5.5	Decode Card Configuration	44
3.8.5.6	User Management.....	45
3.8.5.7	Device Manager	46
3.8.5.8	NVD Manage.....	48
3.9	Device Health Status.....	48
3.10	Full Menu	50
3.10.1	Modify Password.....	50
3.10.2	Device	50
3.10.3	Alarm.....	50
3.10.4	Record Manage.....	51
3.10.5	Scheme Task.....	51
3.10.6	E-map	51
3.10.7	Configuration.....	52
3.10.8	Log out.....	52
3.10.9	Exit.....	52

3.11	Tray Menu.....	52
3.11.1	Modify Password.....	53
3.11.2	Alarm.....	53
3.11.3	E-map View.....	53
3.11.4	Health Report.....	53
3.11.5	Color Default Setup	53
3.11.6	Scheme Task.....	53
3.11.7	Begin/Stop Record Plan.....	54
3.11.8	Close Alarm Sound.....	54
3.11.9	Log out.....	54
3.11.10	Exit.....	54
4	OPERATION INSTRUCTION	55
4.1	Monitor Operation.....	55
4.2	Monitor Task and Monitor Project	56
4.3	PTZ Control	56
4.4	Playback.....	56
4.4.1	Device Record Playback.....	56
4.4.2	Local Record Playback	57
4.4.3	Download	57
4.4.4	Record Play Control	57
4.4.5	Others	57
4.5	Snapshot and Manual Record.....	57
4.6	E-map.....	57
4.7	Log out	58
5	PERIPHERAL DEVICE OPERATION.....	59
5.1	Decode Card	59

5.2	NVD	59
5.2.1	Menu.....	59
5.2.2	NVD Control Principle	59
5.2.3	Audio talk	61

Welcome

Thank you for using our Professional Surveillance Software (PSS)!

This user's manual is designed to be a reference tool for operation of your system.

Here you can find detailed operation information about PSS.

1 Overview and Environment

1.1 Overview

PSS is an abbreviation for Professional Surveillance Software.

It is software to manage small quantity security surveillance devices. It releases with the device and does not support the products from other manufacturers.

It can view several camera channels from various devices, and it can view the recorded video files from various devices. PSS can support multiple scheduled arms to realize auto PC guard.

PSS supports e-map; you can clearly view all device locations.

It can create individual configuration files for each user, which allows you maintain your own habit and style.

Please note, it can run only once in one PC.

1.2 Environment

- OS: Windows2000 / XP /2003/Vista.
- CPU: 2.4GHz or higher.
- Display card: Independent card and support DirectX 8.0c or higher.
- Memory: 1GB or higher for XP OS.
- Displayer: 1024*768 or higher.

2 Installation and Upgrade

2.1 Installation

Please check the installation CD and make sure it includes the following files:
setup.exe、Pro Surveillance System.ms;

Double click the setup.exe to begin installation. See Figure 2-1.



Figure 2-1

Click next button to go to installation interface. See Figure 2-2.



Figure 2-2

Click next button, you can see an interface is shown as in Figure 2-3. Please input user name and organization name.



Figure 2-3

Click next button, you can see an interface is shown as below. Please select installation folder. Default folder is C:\Program Files\Pro Surveillance System\. See Figure 2-4.

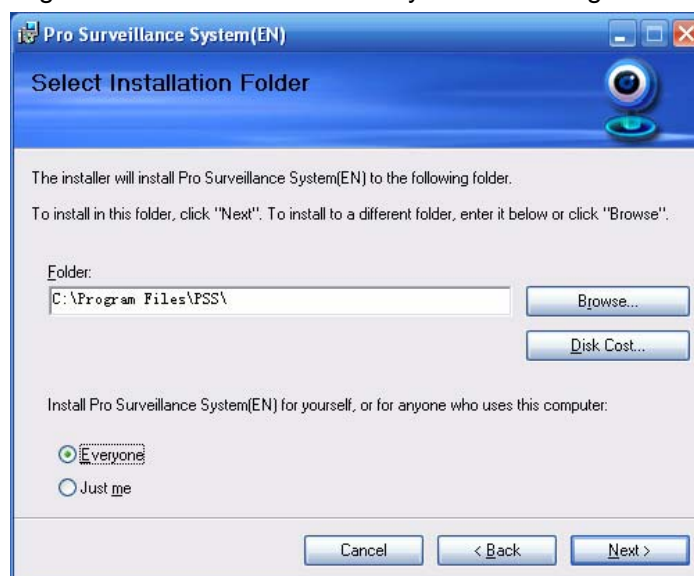


Figure 2-4

Click next button, you can see there is an interface asking you to confirm the installation. See Figure 2-5.

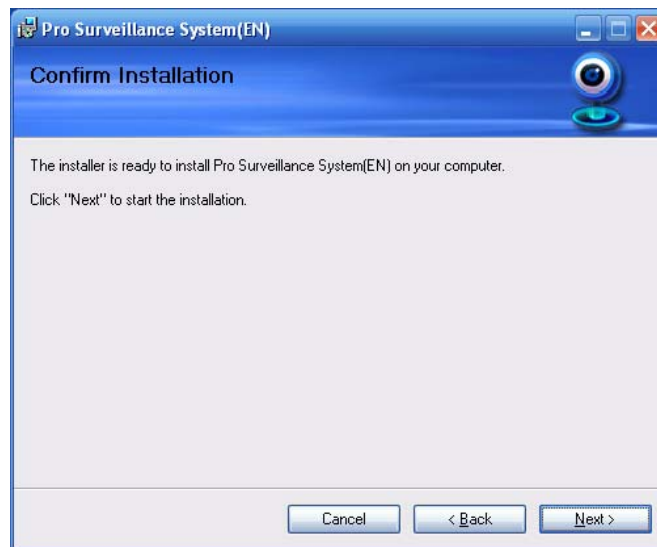


Figure 2-5

Click next button, system begins installation. The interface is shown as in Figure 2-6.

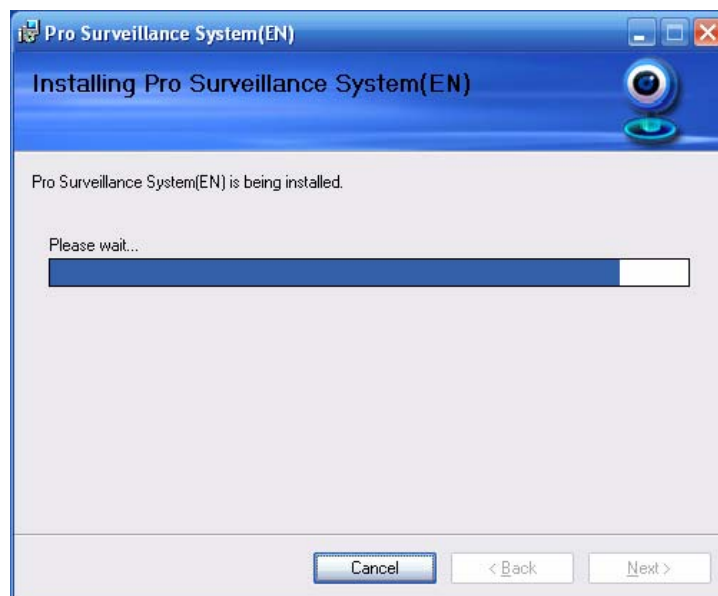


Figure 2-6

During the installation process, you can click cancel button to exit.

After installation, you can see an interface is shown as below. See Figure 2-7.

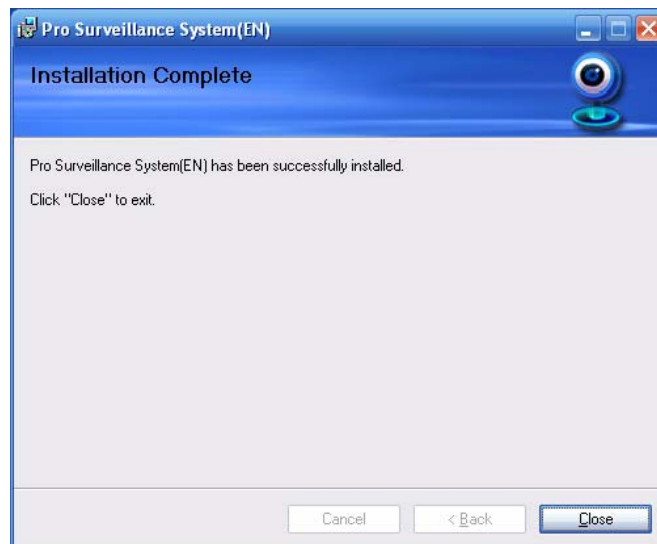


Figure 2-7

Click close button, you can complete the installation.

2.2 Un-installation

There are two ways for you to remove the PSS.

2.2.1 Windows Menu

From the control panel to the add/remove program, you can see an interface is shown as in Figure 2-8.

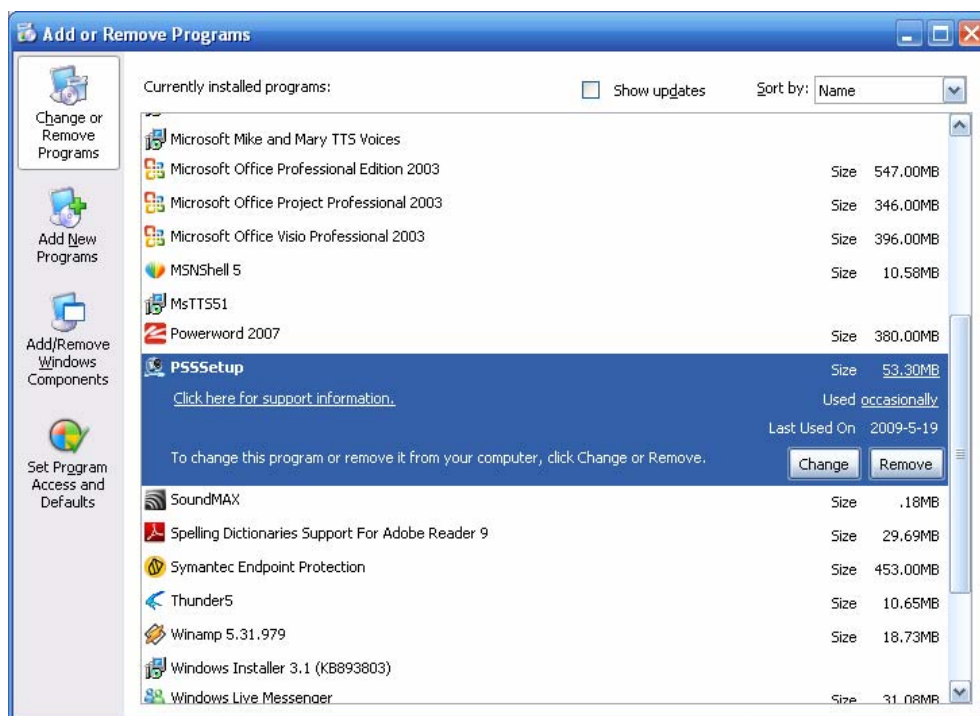


Figure 2-8

Click remove button, you can see a dialogue box is shown as in Figure 2-9.

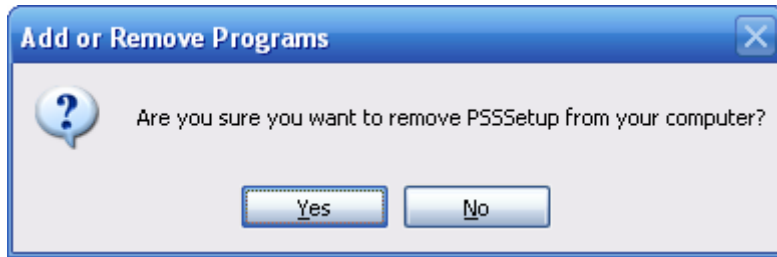


Figure 2-9

Click Yes button to remove PSS.

2.2.2 Start Menu

From Start menu-> All programs->PSS, select PSS uninstall item.

System pops up the following dialogue box. See Figure 2-10. Please click yes to remove PSS.

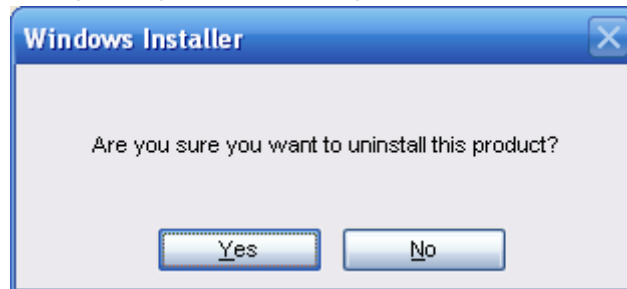


Figure 2-10

2.2.3 Resource CD

You can click the PSSSetup.ms in the installation CD, system pops up the following dialogue box.

Please select remove PSS item to delete it. See Figure 2-11.

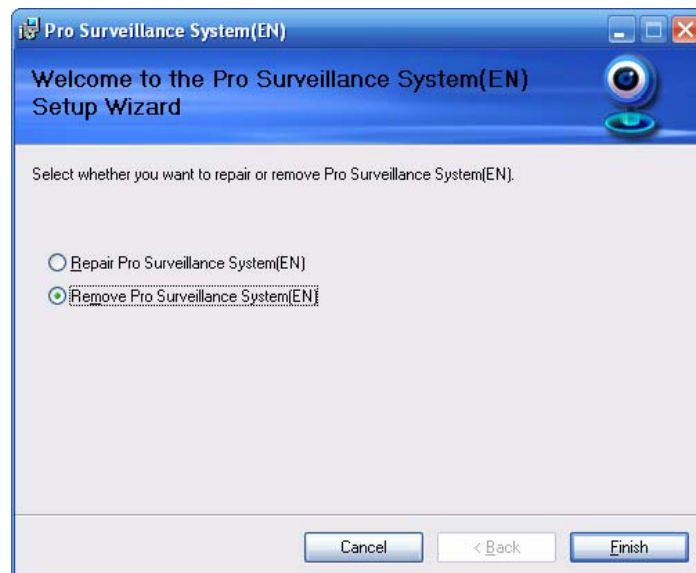


Figure 2-11

2.3 Upgrade

2.3.1 Software of the same version

If there is PSS software of the same version in the PC, you can see a dialogue box is shown as in Figure 2-12. Please click repair PSS setup to update the PSS.

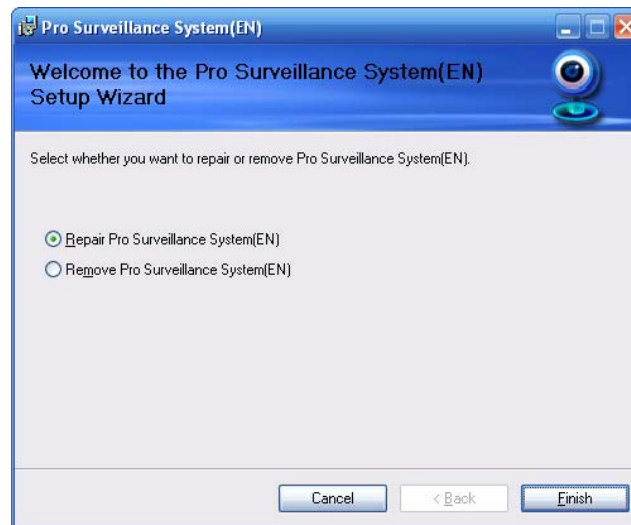


Figure 2-12

During the repair process, the interface is shown as in Figure 2-13.

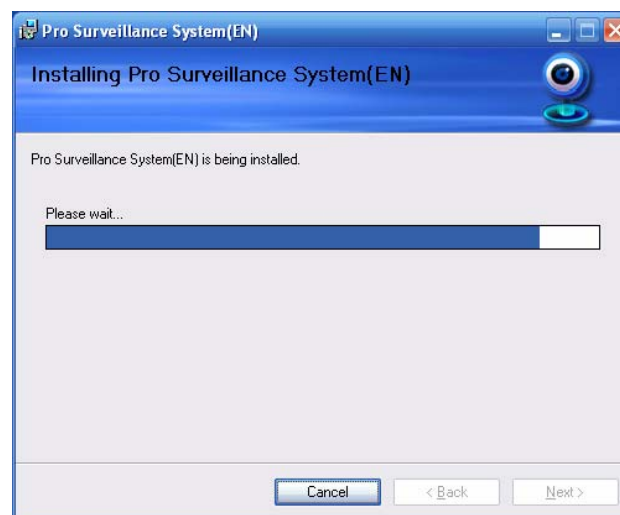


Figure 2-13

During the process, you can click cancel button to exit.

After installation, you can see an interface is shown as below. See Figure 2-14.

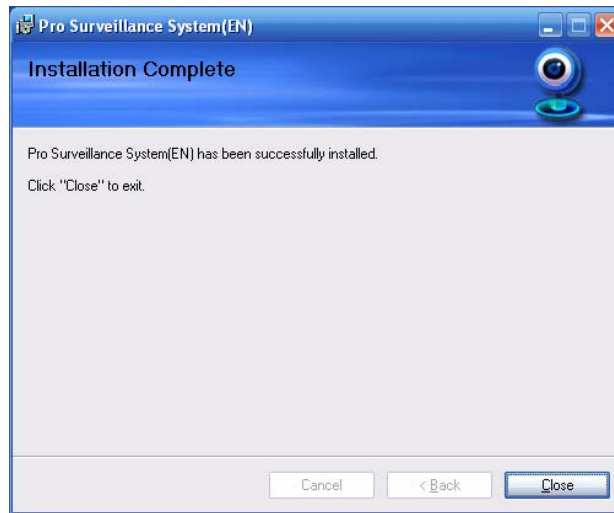


Figure 2-14

Click close button, you can complete the installation.

2.3.2 Software of different version

If your PC has installed different version, please uninstall the PSS first and then install the latest version. For detailed installation steps, please refer to chapter 2.1 install.

3 Interface



Double click PSS icon PSS , you can go to the login interface.

3.1 Login Interface

Login interface is shown as in Figure 3-1.

- User name: Input the user account
- Password: Please input corresponding password to log in.
- OK: Click this button, system can verify the account and then enter the software main interface.
- Cancel: Click this button to exit login interface.

Note:

- If it is your first time to run the PSS program, default user name is admin. Admin is a super administrator and can not be removed. It can add, modify or delete other user.
- For security reason, please modify your password after first log in.
- You can memory your password, so that when you can log in the next time, you do not need to input user name and password. Please note this function is for your convenient only. **Do not** enable this function in public PC.



Figure 3-1

3.2 Initialization Interface

Click OK button, system begins verifying user name and password and then go to the initialization interface. See Figure 3-2.

Please note it may take a little bit longer to initialize decode card, please be patient.

If it is your first time to use PSS, please go to chapter 3.7.5.2 Option to implement setup.



Figure 3-2

3.3 Main Interface

In the main interface, there are real-time monitor interface and other operation and function menu. See Figure 3-3.

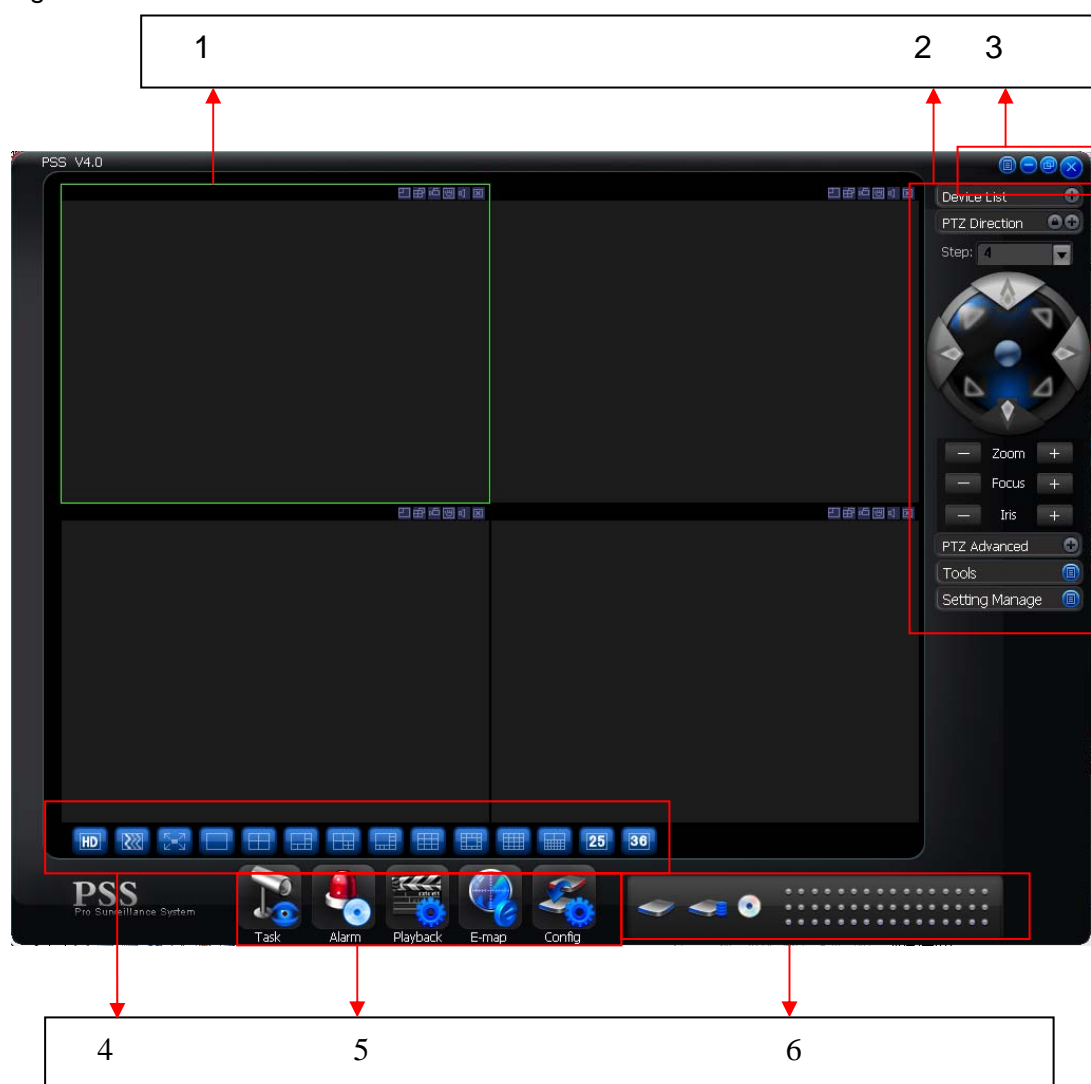


Figure 3-3

- Section 1: Current display window. It is circled by a green boundary. For video control information, please refer to chapter 3.5 Video control zone.
- Section 2: Right tool bar. Here you can view the five buttons: Device list (chapter 3.8.1).PTZ direction (Chapter 3.8.2), PTZ advanced (chapter 3.8.3), Tool (chapter 3.8.4), Setting Manage (chapter 3.8.5).
- Section 3: There are four buttons. Close/Minimize/Switch/Full menu. For close/Minimize/Switch button information, please refer to chapter 3.4.Click full menu button; you can view a menu shown as in Figure 3-4. For detail full menu information, please refer to chapter 3.10.

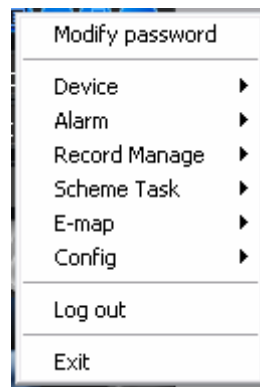


Figure 3-4

- Section 4: Screen display mode. Please refer to chapter 3.6 for detailed information.
- Section 5: Function buttons. Here you can view the following buttons: Task (chapter 3.7.1), Alarm (chapter 3.7.2), Playback (chapter 3.7.3), E-map (chapter 3.7.4), and Configuration (chapter 3.7.5).
- Section 6: Device health status. Please refer to chapter 3.9 for detailed information.

When PSS is running, you can also see there is a little icon on your right tray menu. See Figure 3-5.



Figure 3-5

Right click mouse, you can see an interface is shown as in Figure 3-6.
Please go to chapter 3.11 for detail information.

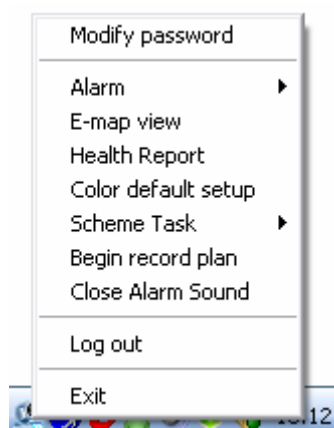











Figure 3-6

3.4 Interface Button

Please refer to the following sheet for interface button information.

SN	Icon	Function
1		Click it to display full menu.
2		Display sub-window.
3		Maximize/minimize, restore/switch button.
4		Lock/unlock sub-window.
5		Minimize
6		Close current sub-window.
7		Close current window.
8		Tray menu button.
9		These two button are usually in user management or configuration interface. Click Ok to save current modification and then exit. Click Cancel to exit without saving current setup.

3.5 Video Control Zone

On the video upper right, there are six icons. See Figure 3-7.

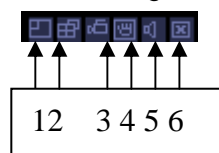


Figure 3-7

Please refer to the following sheet for detail information.

1	Digital zoom	Click this button and then left drag the mouse in the zone to zoom in. Right click mouse system restores original status.
2	Change show mode	Resize or switch to full screen mode. You can double click mouse to change the mode.
3	Local record	When you click local record button, the system begins recording. The recorded file is saved to system folder.
4	Capture picture	You can snapshot important video. All images are memorized in system folder.

5	Audio	Turn on or off audio.(It has no relationship with system audio setup)
6	Close video	Close video in current window.

3.6 Screen Display Mode

Screen display mode interface is shown as in Figure 3-8.

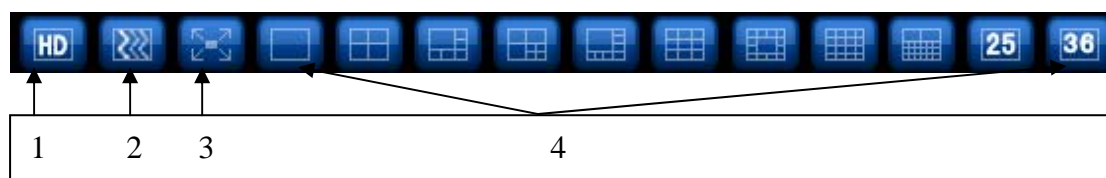


Figure 3-8

From the left to the right, there are video quality, real-time/fluent button, full-screen button and 1-36 screen modes.

Note:

In full-screen mode or the window is maximized, sometimes you may notice the height and width of small window can adjust according to the displayer.

3.7 Function Button

Function button is shown as in Figure 3-9.

It consists of the five buttons: Task/Alarm/Playback/E-map/Config.



Figure 3-9

3.7.1 Task

Click Task button, the interface is shown as below. See Figure 3-10.

Here you can enable/disable the task or project item.

Pause/restore button: Once you enabled one task/project, system display pause button.

Circle means current task is in progress.

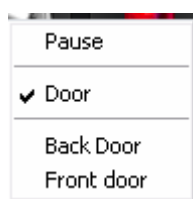


Figure 3-10

3.7.2 Alarm

Alarm manage interface is shown as in Figure 3-11.

First you need to select the type. The alarm consists of five types: External alarm/Motion detection/Video loss/Camera masking/other alarms.

Then you can select the alarm device.

Now you can see alarm time and alarm detail information.

Please go to chapter 3.7.5.2 to set “alarm record max amount”. Once the record is full, system automatically overwrites the previous one.

For alarm information management operation, please refer to chapter 3.8.5.3.

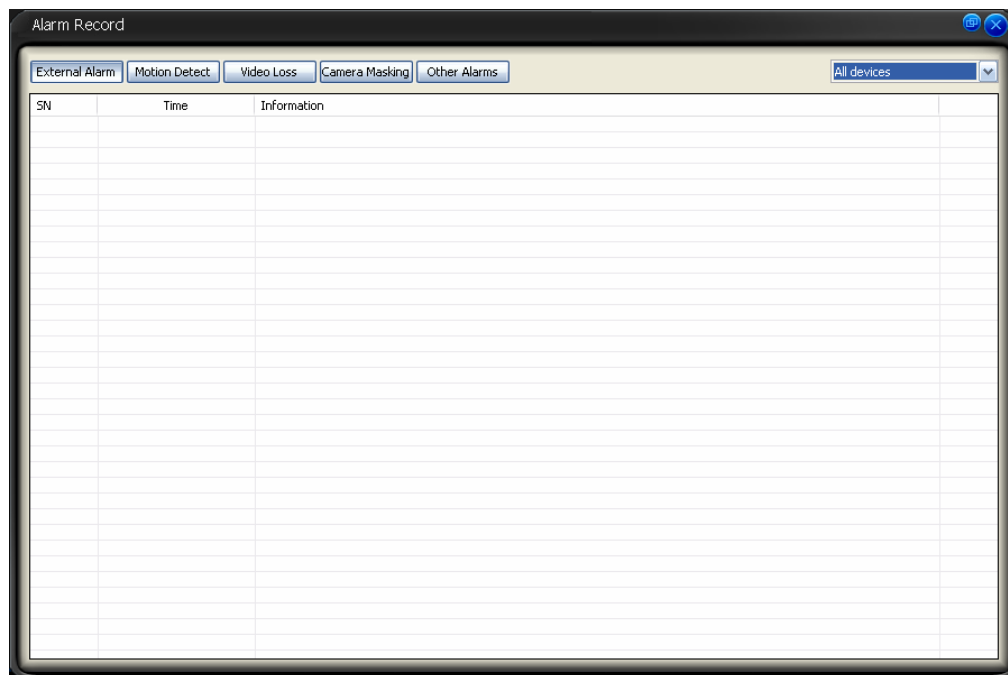


Figure 3-11

3.7.3 Playback

Here you can view the remote device you can control, and corresponding local record playback and download. See Figure 3-12

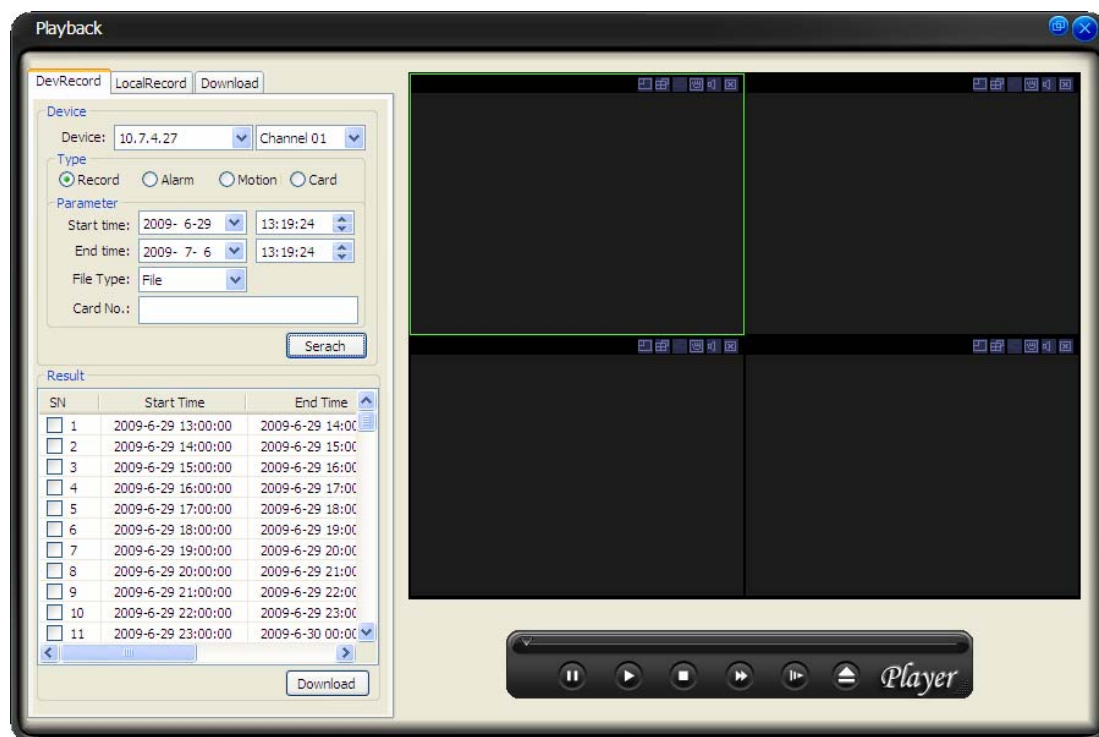


Figure 3-12

Please refer to the following sheet for detailed information.

Parameter	Function
Type	Search general record, alarm record and motion detection record.
Alarm	Search alarm record.
Motion Detection	Search motion detection record.
Card	Search card record.
Start time	Set the file start time.
End time	Set the file end time.
Channel	Select the channel from the dropdown list.
Search	Click this button you can view the recorded file matched your requirements.
Playback	Select the file first and then click playback button to view the video. Double click serial number (SN) column you can select all files.
Download type	<ul style="list-style-type: none"> Download by file: Select the file(s) and then click download button. Download by time: Download the recorded file(s) within your specified period.

Parameter	Function
Download	<ul style="list-style-type: none"> • Select the file you need (multiple choices) and then click download button, you can see system pops up a dialogue box, please specify file name and path to download the file(s) to your local pc. • Input the downloaded file name, specify the path and then click OK button. You can see system begins download and the download becomes stop button. There is a progress bar for your reference.
Local record	<p>Select local record to play.</p> <p>Double click serial number (SN) column you can select all files.</p>

Please note, for playback function, sometimes, due to network factor or device right factor, you can not playback some files.

Please note record save path and download save path are not the same. Please refer to chapter 3.7.5.2.

3.7.4 E-map

Click E-map button, the interface is shown as in Figure 3-13.

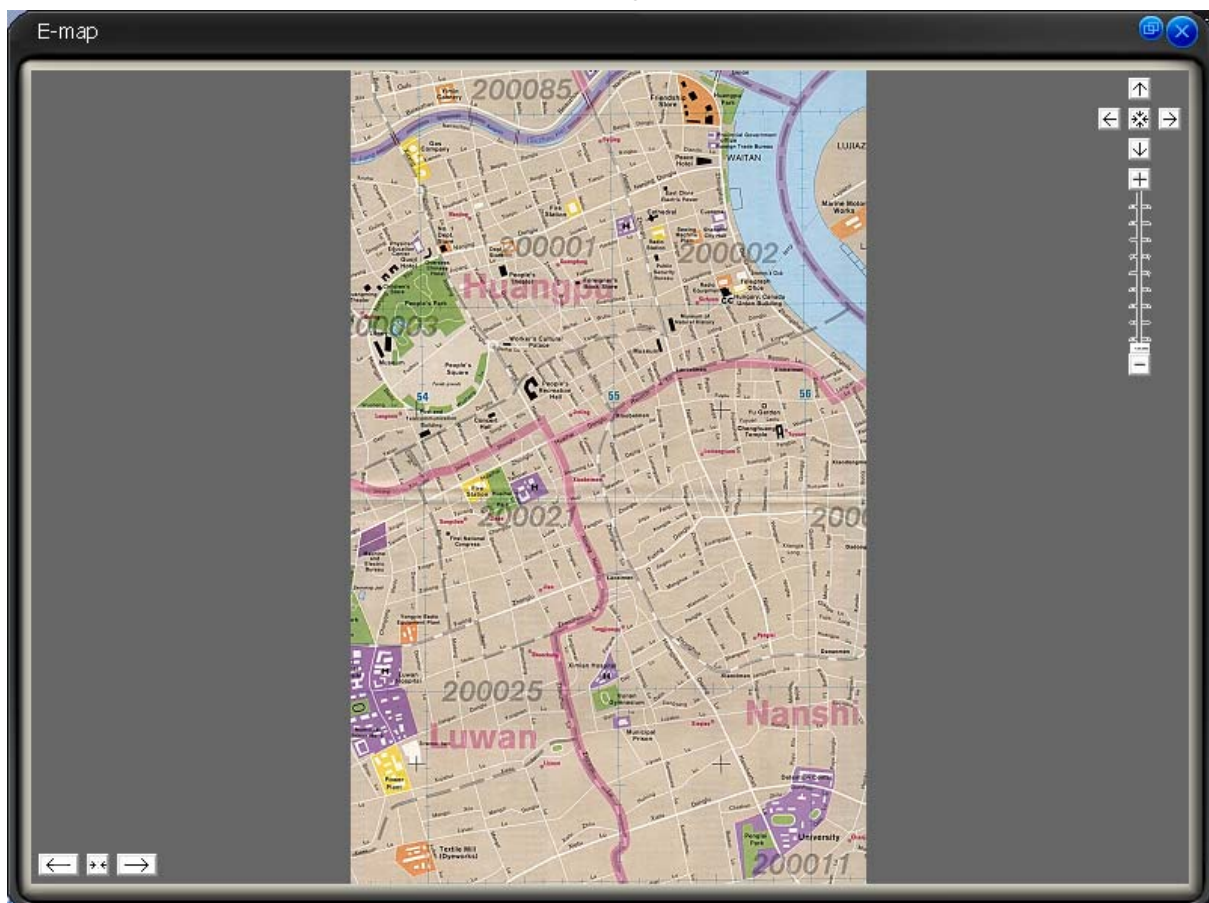


Figure 3-13



On the top right, is to move e-map position. The centre button is to go to the e-map centre. It is valid when e-map has been zoom in.



The left button is to view previous browser image and the next browser image. The middle button is to go back to the main e-map and clear browser history.

Double click sub e-map to go to the next e-map. Double click camera to open the monitor video.



It is to zoom in or zoom out the e-map. Roll the mouse you can also zoom the e-map.

If you have armed the camera or alarm channel, when alarm occurs, the corresponding camera or alarm device will flash.

For detail E-map setup and implement, please refer to chapter 3.8.5.4.

3.7.5 Configuration

Click Config button, you can see an interface is shown as below. See Figure 3-14.

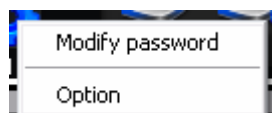


Figure 3-14

3.7.5.1 Password Modification

Click password modification button, system pops up the following interface. See Figure 3-15.

Figure 3-15

Please input the old password and then input new password twice to change the password.

3.7.5.2 Option

Click option button, the interface is shown as in Figure 3-16.

- Language: PSS support various languages. Please select from the dropdown list.
- Record Time (M): Please select from the dropdown list.
- Snapshot image path: You can specify image save default path.
- Picture file name rule: You can specify image name rule in the dialogue box.

- Recorded file path: You can specify the file save path.
- Recorded file name rule: You can specify file name rule in the dialogue box.
- Device free minimum space (MB): You can specify a value here. Once the capacity reaches the specified threshold, system can stop record.
- Downloaded file path: You can specify the download file
- Download record file name rule: You can specify download file rule in the dialogue box,
- E-map XML file path: Here you can specify E-map file XML file save path.
- E-map image loading path: You can specify from the dialogue box.
- Hotkey Setup: Here you can set hot key for the operation button. Please note system default debug hot key is F12. Do not set the debug key when you set the hotkey button.
- Displayed items in the right bar: System show which operation button by default.
- Alarm record max amount: Motion detection alarm display the max save records.
- Refresh interval: Here you can specify device health status update interval. Please refer to Chapter 3.9.
- Display alarm item in the interface: Here you can specify you most concern alarm items. Please refer to chapter 3.9.
- Add disarming alarm message to the alarm record: Enable this function, system can add the disarming alarm message to the alarm record interface. Otherwise, system only displays the armed alarm message.
- Auto start project: The project to be run.
- Project name: please input the project you wan to run automatically.
- Auto start task: The task to be run.
- Task name: Please input the task you wan to run automatically.
- Last run: The last running project or task.
- Preview picture: Open image mode when preview.
- System default open mode: System use default program to open the image.
- Log in all devices: System auto log in all devices when PSS booted up.
- Load decode card when PSS booted up: System loads the decode card by default when PSS booted up.
- Auto start record plan: System enable record project by default when PSS booted up.
- Auto pop up alarm information dialogue box: System can pop up the alarm message dialogue box when there is new alarm.

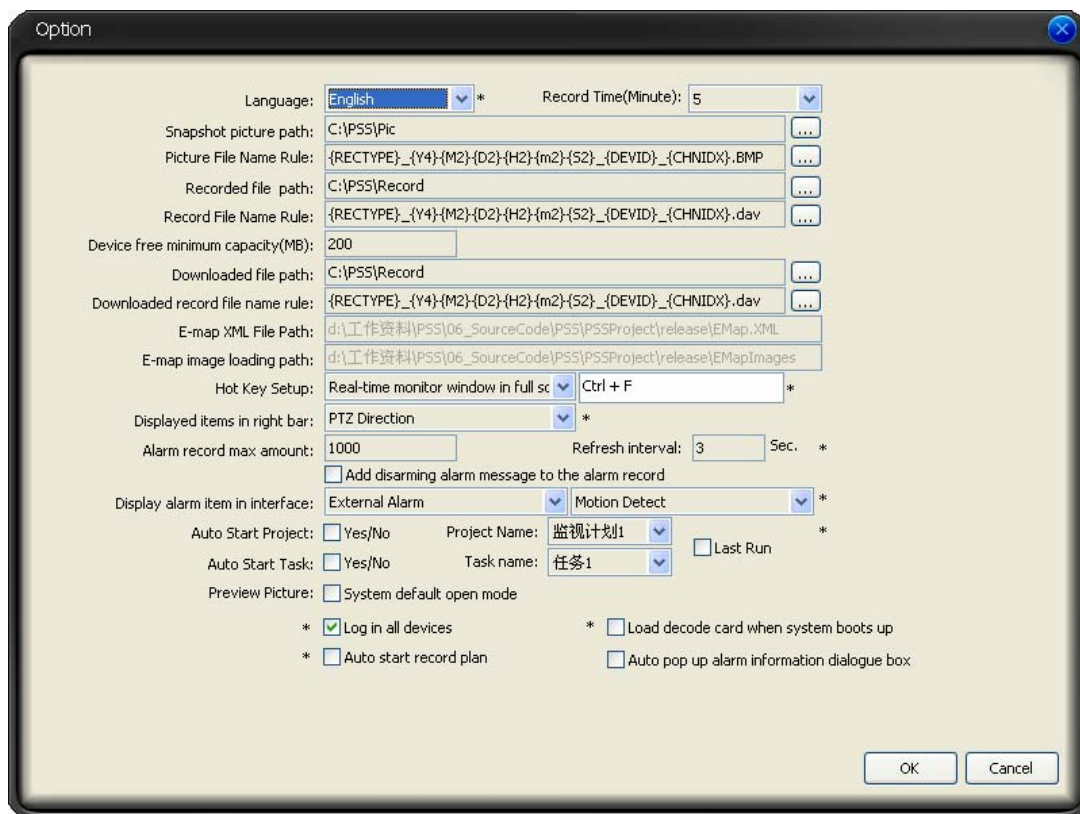


Figure 3-16

Note:

You need to reboot the system to activate the items with *!

Click OK button, you can see a dialogue box shown as in Figure 3-17.

Click Ok to reboot the PSS.

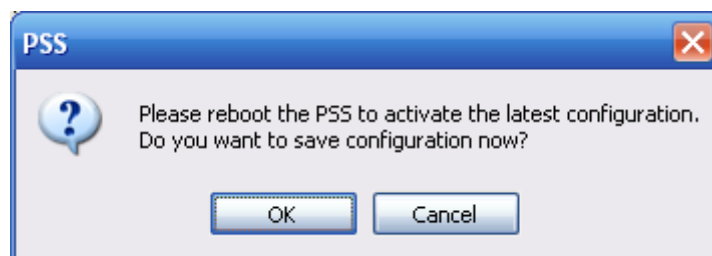


Figure 3-17

3.8 Right Tool Bar

System right tool bar is shown as in Figure 3-18.



Figure 3-18

3.8.1 Device List

Here you can view all the devices information you can configure. All logged in device channel have open. See Figure 3-19.

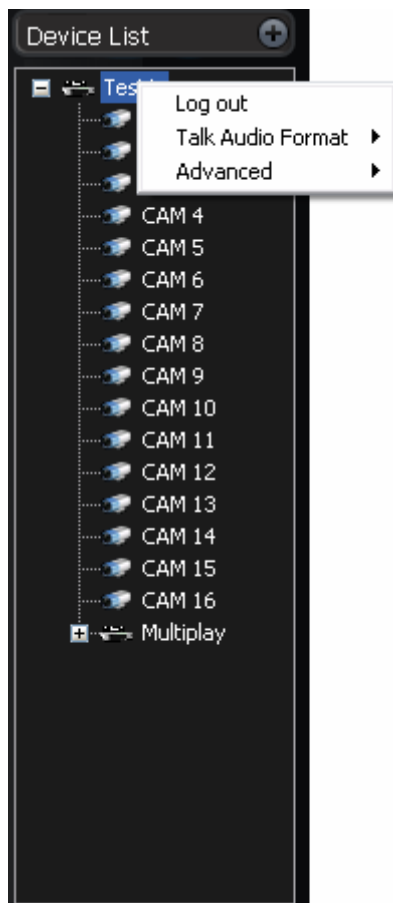


Figure 3-19

Select one device and then right click mouse, you can see device operation menu. It consists of three items: Log out/Audio talk mode/Advance. Please note the audio talk format and advanced is valid for logged in device only.

- Log out: log out current device.
- Audio talk format: System pops up the audio encode mode it supported. You can select the audio encode mode. The circle means there is audio talk in process. You can also right click mouse in one window to select the audio talk mode system supported.
- Advanced: It consists of synchronization PC/reboot/Device configuration.
 - ✧ Synchronization device time: it is to synchronize device time with the PC.
 - ✧ Reboot: It is to reboot current device.
 - ✧ Device configuration: Please refer to corresponding device user's manual for configuration information. Please note SVR does not support configuration function.

Important

Please note, since one device supports only one audio talk operation, once you have enabled audio talk function in NVD, you can not enable audio talk in device operation.


Audio talk mode G711U is for special device only.

3.8.2 PTZ Direction Control

If you want to use PTZ function, please make sure:

- Current device has PTZ function.
- You have proper right to control the PTZ.

If you still can not use PTZ function, please check device PTZ protocol is right or not.





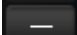

Click the lock icon, the PTZ interface becomes independent and can overlay the specified screen as you desire.

The PTZ direction interface is shown as in Figure 3-20.

The step value ranges from 1 to 8. There are eight direction keys.

In the middle of the eight direction arrows, Click this button, system goes back to the single screen mode. Drag the mouse in the screen to adjust section size. When the mouse move from the up to the down, you can see the screen zoom in. When the mouse from the down to the up, you can see the screen zoom out. Please note you need to use mouse to operate this function.

Here is a sheet for you reference.

Name	Function key	function	Function key	function
Zoom		Near		Far
Focus		Near		Far
Iris		close		Open

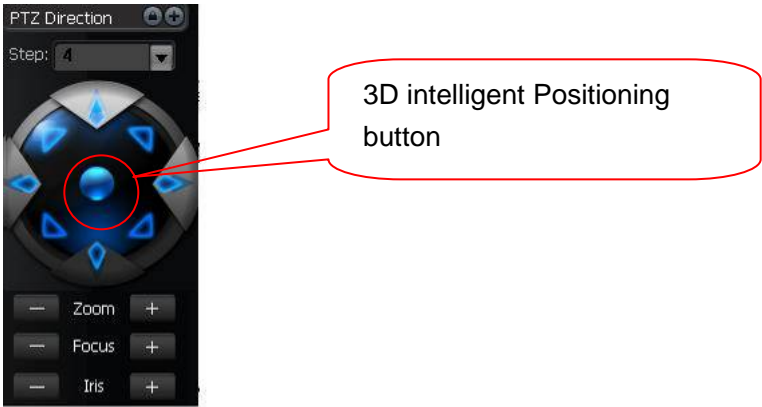


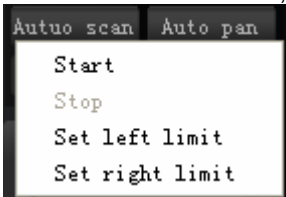
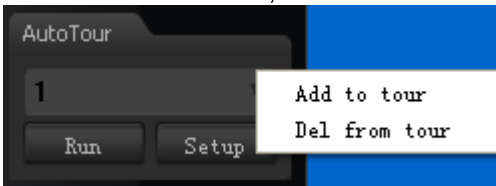
Figure 3-20

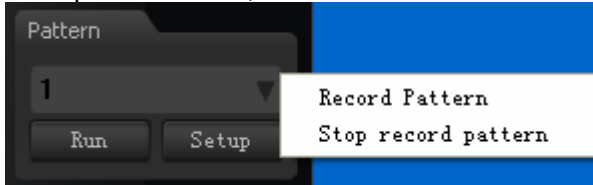
3.8.3 PTZ Advanced

Click PTZ advanced, the interface is shown as in Figure 3-21.



Figure 3-21

Parameter	Function
Scan	<p>Click auto scan button, the interface is shown as below.</p>  <p>You can set scan left limit and right limit and then start a scan. Move the camera to you desired location and then click left limit button. Then move the camera again and then click right limit button to set a right limit.</p>
Preset	<p>Use direction keys to move the camera to your desired location and then input preset value. Click add button, you have set one preset.</p>
Tour	<p>Click auto tour button, the interface is shown as in below.</p>  <p>Input auto tour value and preset value. Click add button, you have added one preset in the tour. Repeat the above procedures you can add more presets in one tour. Or you can click delete button to remove one preset from the tour.</p>

Parameter	Function
Pattern	<p>Click pattern button, the interface is shown as below.</p>  <p>You can input pattern value and then click start record button to begin PTZ movement. Please implement camera operation. Then you can click stop record button. Now you have set one pattern.</p>
Aux	For some special functions, you need to use Aux button.
Flip	For camera supports flip function, system can turn video upside down and then collect.
Light	For most fixed cameras, it has its own light.
Wiper	For most fixed cameras, it has its own wiper.

3.8.4 Tool

Click tool button, you can see the following interface. See Figure 3-22.



Figure 3-22

3.8.4.1 Begin/Stop record plan

After you set the record plan, you can click this button to enable it. Once there is running record plan, the item becomes “stop record plan” button.

3.8.4.2 NVD Control

NVD is a product of our company. You can use NVD to output the video to the TV wall or other devices. The interface is shown as in Figure 3-23.

It consists of five sections.

- Section 1: NVD device list.
- Section2: It consist of two buttons:
 - ✧ Log in/Log out: You can click it to log in or log out the device.
 - ✧ NVD manage: Please refer to Chapter 3.8.5.8 for NVD manage information.
- Section3: Video device list. Open the video and then drag the corresponding channel to the decoder output channel, the decoder can output the video from current channel to the specified device.
- Section 4: NVD operation consists of three sections: operation, search and tour. All the operations become active when NVD is running normally.
- Section5: It is decoder control zone. It is the four output channels. You can double click sub-window to switch to 1/4 window display mode.

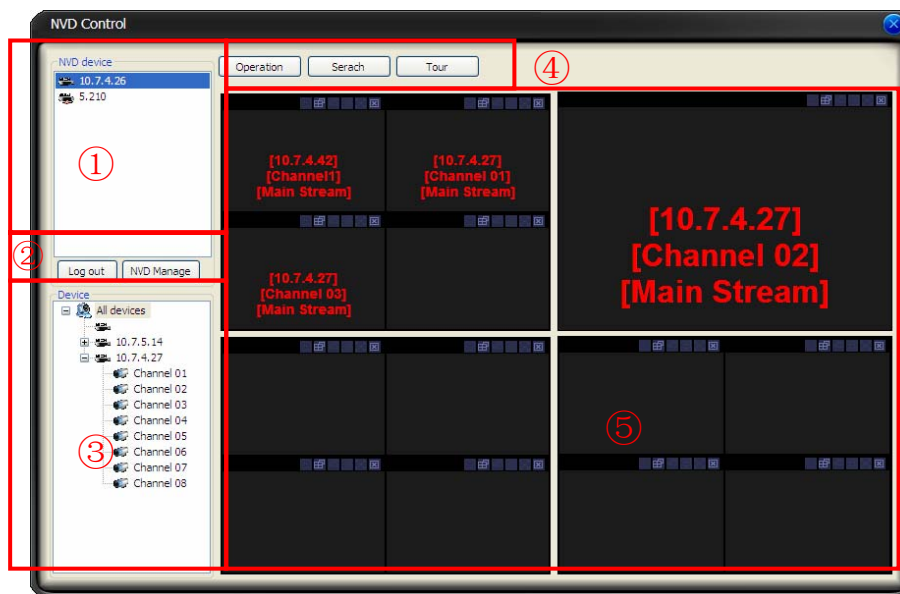


Figure 3-23

Search

You can click search button to view NVD window split mode and each video sourcing information. Channel and sub-window are NVD information. IP, port, user and video channel are video sourcing information. See Figure 3-24.

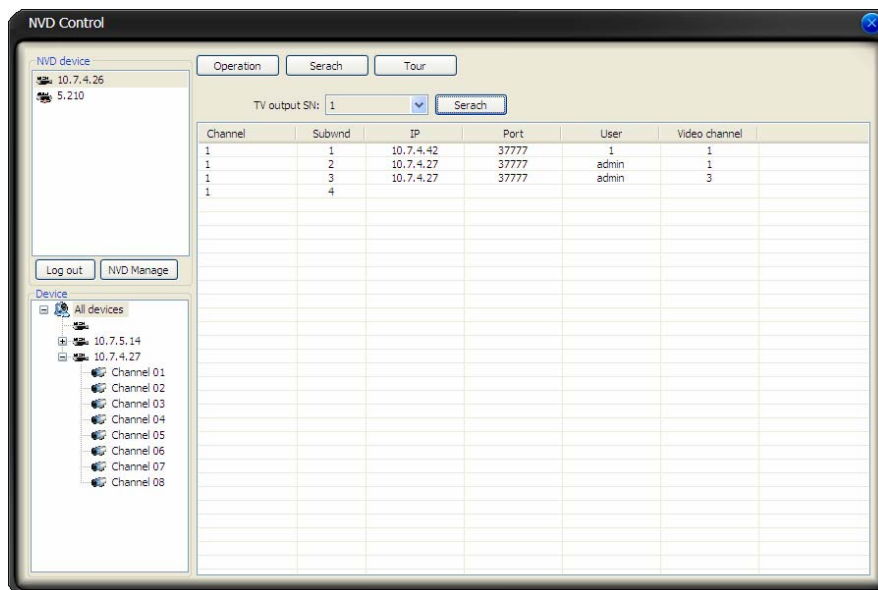


Figure 3-24

Tour

Select channel: for 1-window split, there is only one channel. And for four-window split, there are four channels available.

Add: You can add new tour setup to the NVD tour plan. See Figure 3-25.

Delete/Delete all: You can delete the NVD tour plan.

Tour: Click this button to enable NVD tour.

Interval: Please input interval value here.

Please note, the add/delete operation only becomes valid when the NVD connection is OK.

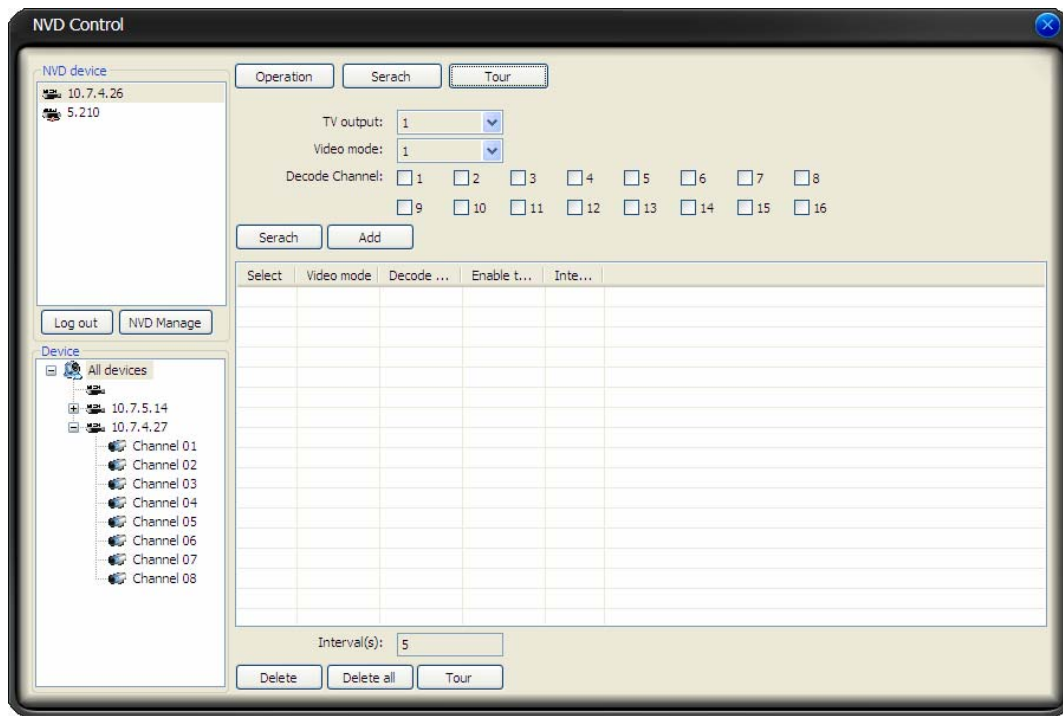


Figure 3-25

3.8.4.3 Health Report

Health report interface is shown as below. See Figure 3-26.

- Section1: Detail running information of all devices.
- Section2: Once you enable auto refresh function, system can auto update list regularly.
- Section3:
- Refresh: Click refresh button to view latest running status.
- Export: click it to export current running status to the specified file.
- Section4: Record status icon samples.

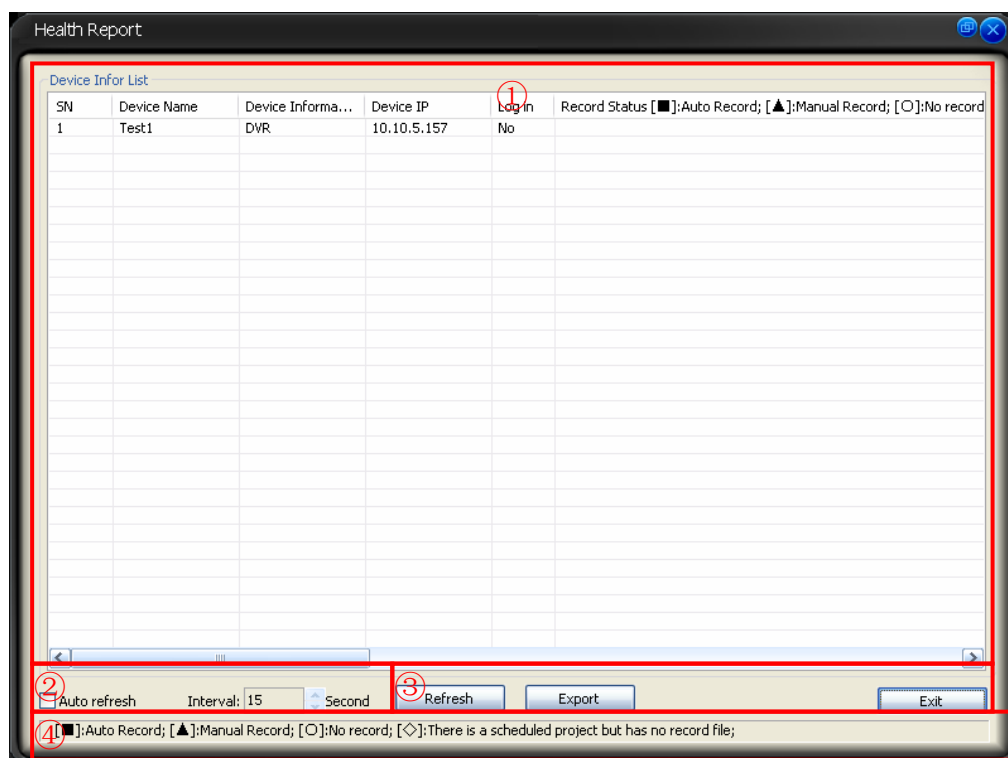


Figure 3-26

3.8.4.4 Color

Color setup interface is shown as in Figure 3-27.

You can click default button to restore default color setup.

Please note, color setup function only applies to the selected video.



Figure 3-27

3.8.4.5 Volume

The volume interface is shown as in Figure 3-28.

There are three function buttons:

Sound box volume control, microphone volume control and close alarm audio.

Close alarm sound function is to close the alarm activated sound.



Figure 3-28

3.8.5 Setting Manage

Setting manage menu is shown as below. See Figure 3-29.

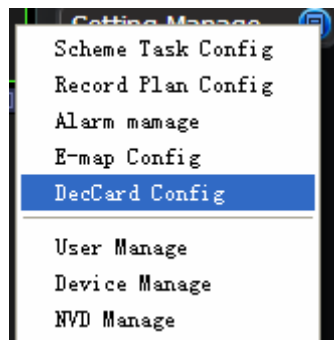


Figure 3-29

3.8.5.1 Scheme and Task (Task and Project)

Please note, when system is in modification mode, you can not modify the task name.

- Task list: Here you can view task name. Select one name, you can view corresponding information on the right side.
- New: Click it you can see an interface is shown as in Figure 3-31. Here you can create a new task.
- Modify: Modification interface is shown as in Figure 3-31. Please note you can not edit task name.
- Delete: You can click it to remove one task.
- Import: You can import task from specified XML file.
- Export: You can export current task to a XML file.

- Camera name (can not be modified.) and camera ID: You can drag the channel name in the device list section to the current column.
- Stay time(s): You can input stay value here.
- Preset: When you open the monitor, system can go to the specified preset. The default preset value is N/A
- Bit stream type: if device supports extra stream, you can set the bit stream when open the video.
- Monitor item: Here you can view task detail information. System begins task from number 1 to number 2 and then go on. You can use Up/Down button to adjust the monitor task sequence.

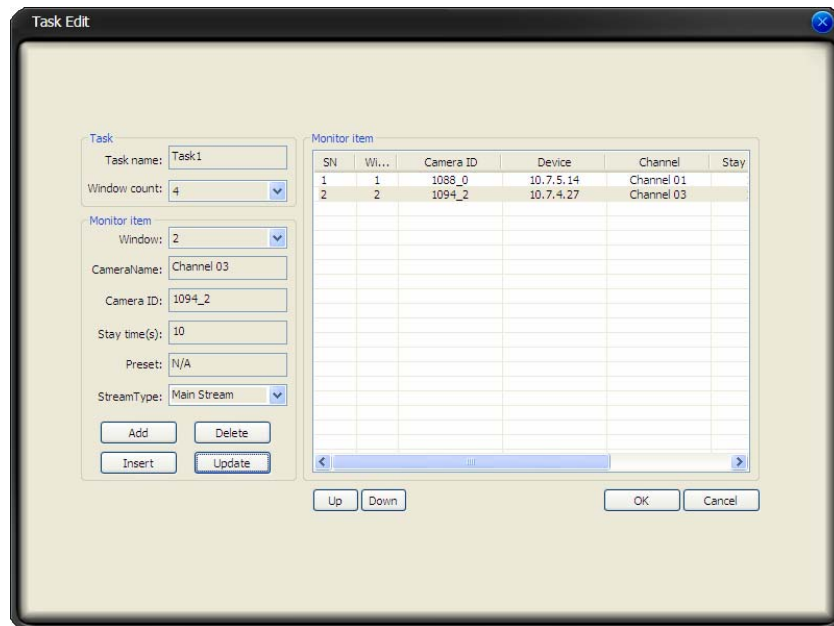


Figure 3-31

Project

Monitor project interface is shown as in Figure 3-32.

- Project list: Here you can view all set project names.
- Project item: Here you can view selected task detailed information.
- New: Click it you can see an interface is shown as in Figure 3-33. Here you can create a new project.
- Modify: Modification interface is shown as in Figure 3-33. Please note you can not edit project name.
- Delete: You can click it to remove one project.
- Import: Import the saved project XML file to current list.
- Export: Export current project list to specified xml file.

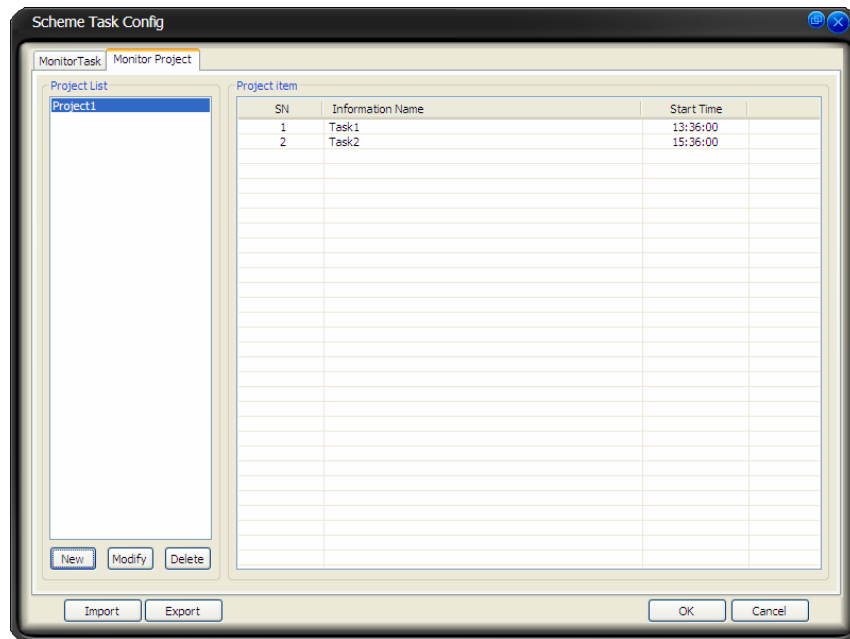


Figure 3-32

Click modify button, the interface is shown as in Figure 3-33.

Please note, in modification mode, you can not modify project name.

- Monitor project name: Current project name (you can modify project name when adding a new project.)
- Task name: Please select the task to be run.
- Start time: Please select the task start time.
- Up and down button is to adjust the monitor task sequence.

Please click save button to exit.

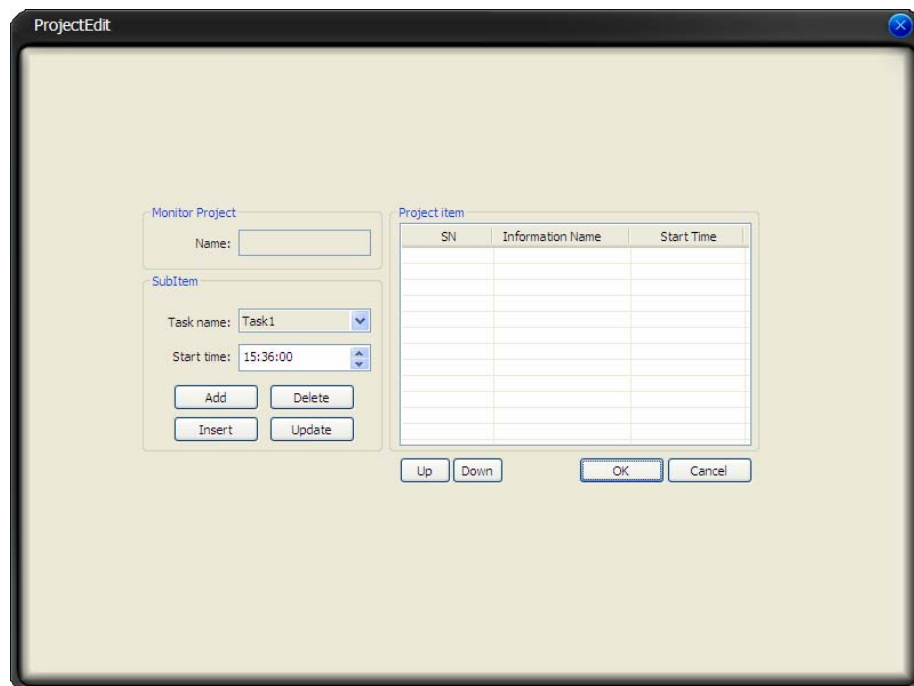


Figure 3-33

3.8.5.2 Record Plan Configuration

- Pack duration (m): System can generate a recorded file when record plan is running. You can input pack duration here.
- Record plan list: The record schedule in the record plan.

Double click time bar or the list column, you can modify schedule period for current camera. Please note, if you want to modify the plan, you can not modify the device information and channel information

[illegible]

Figure 3-34

In Figure 3-34, click edit schedule template, you can see an interface is shown as below. See Figure 3-35.

You can view detail template information on the left side.

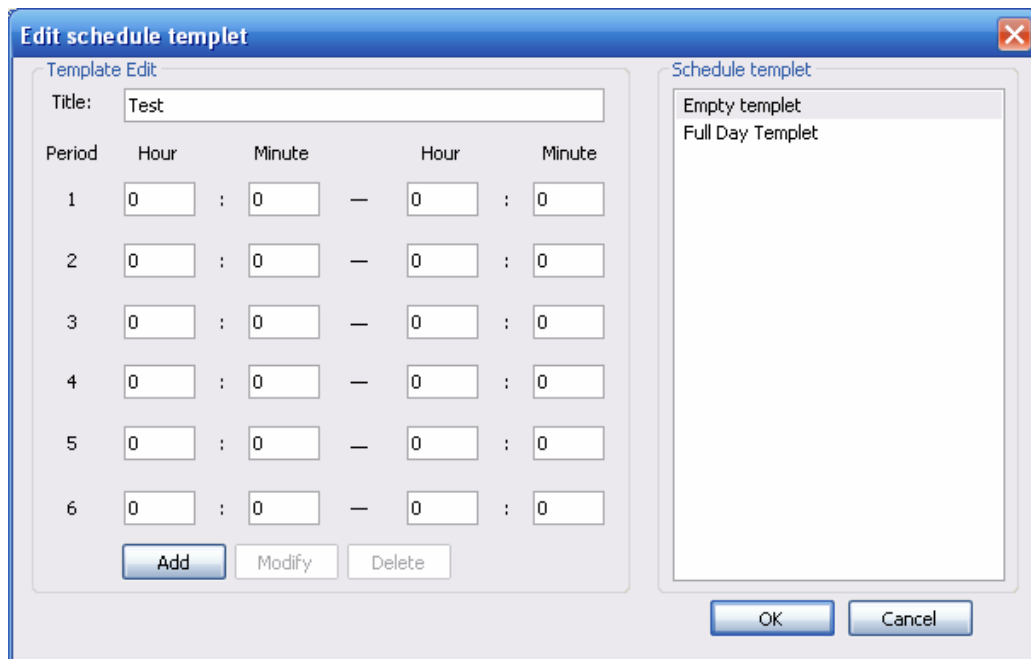


Figure 3-35

In Figure 3-34, click add button, the interface is shown as in Figure 3-36.

- Device: You can select from the dropdown list.
- Channel: You can select from the dropdown list.
- “<-one week” is to apply the selected schedule setup to the whole week.
- “<-” is to apply the selected schedule to the corresponding date(Sun to Sat.)

You can select one templet on the right and then click edit schedule templet button to modify it.

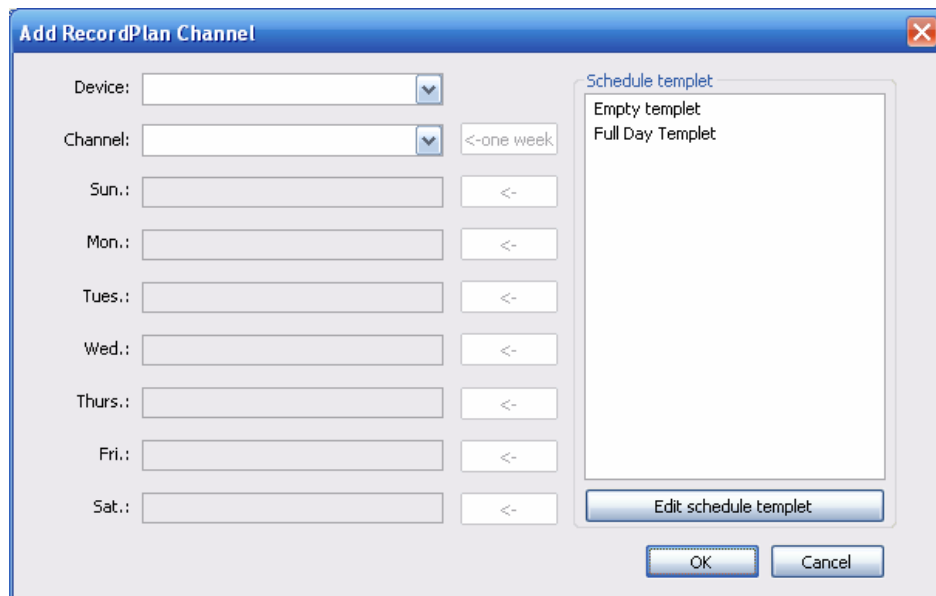


Figure 3-36

3.8.5.3 Alarm Manage

Here you can view all alarm messages. You can go to chapter 3.7.5.2 to set the max alarm record amount. See Figure 3-37.

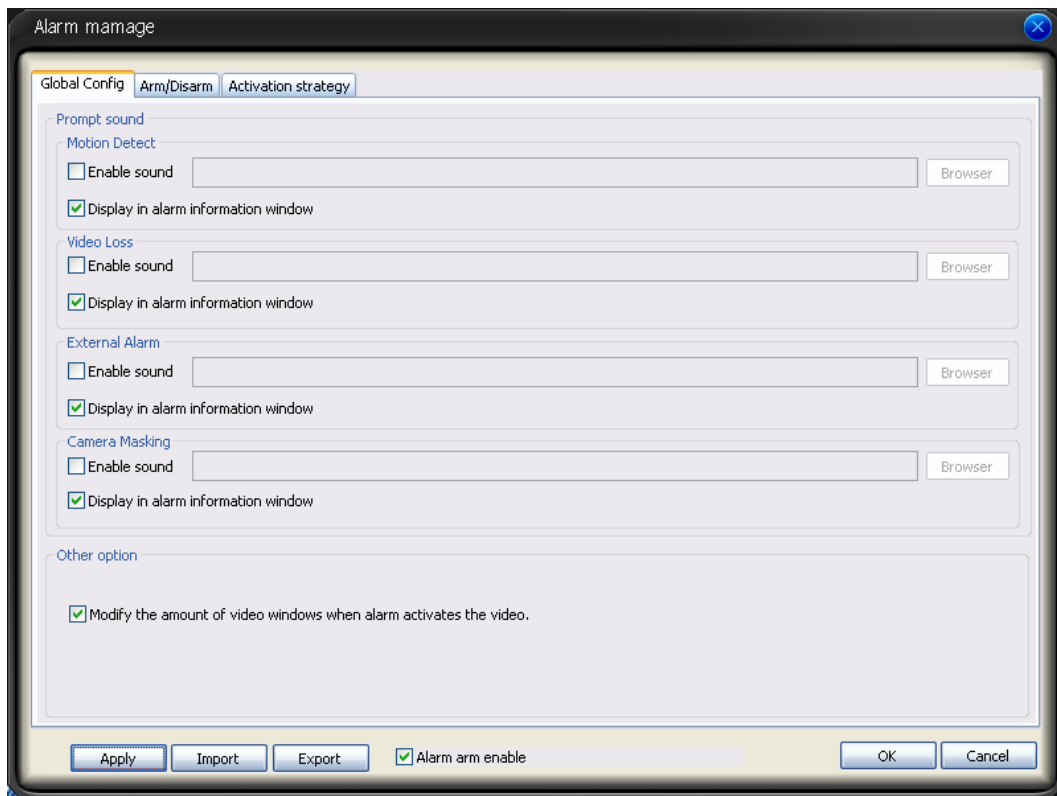


Figure 3-37

Global Configuration

Global Configuration interface is shown as in Figure 3-37.

- Enable sound: Please draw a circle to enable sound function and then click browser button to select corresponding sound file.
- Display in alarm information window: You can enable this function to add alarm message to alarm record window (Chapter 3.7.2).
- Alarm arm enable: You can enable this function to use alarm setup. Otherwise the alarm setup is null.

Arm/Disarm

Arm/disarm interface is shown as in Figure 3-38.

The arm has four types: Motion detection/video loss/Camera masking/External alarm.

You can select corresponding setup to the specified channel.

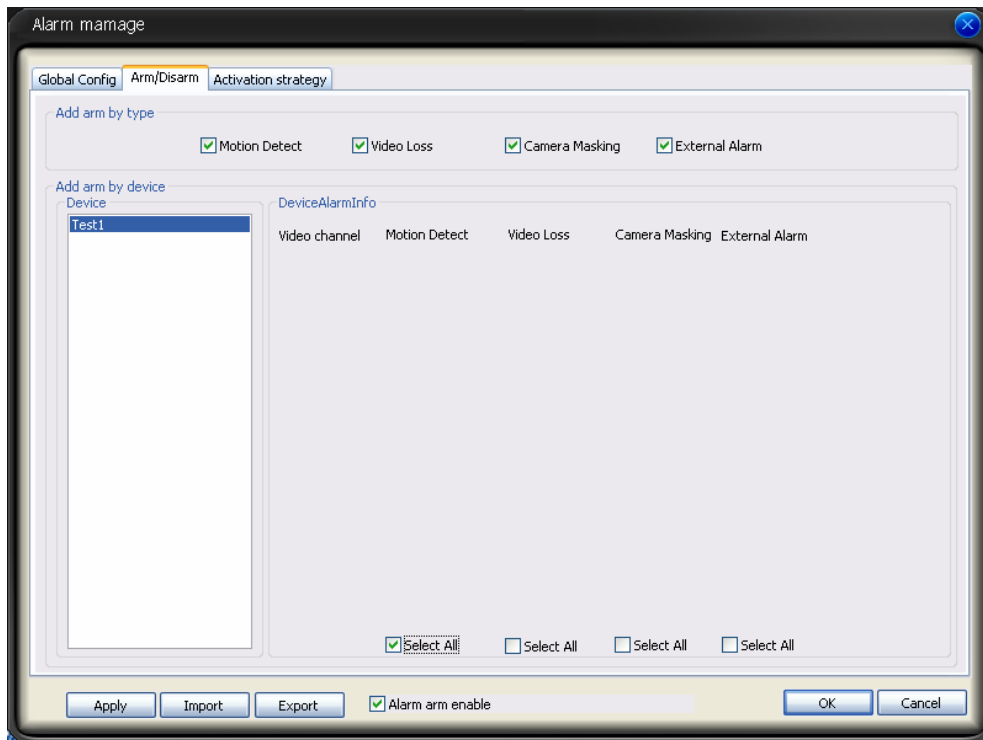



Figure 3-38

Activation Strategy

Activation strategy interface is shown as below. See Figure 3-39.

- Alarm device: In the alarm device list, you can view the alarm sourcing device. You can set several activation operations for one alarm sourcing device.
- Type: You can select the activated alarm type from the dropdown list.
- Resume previous video after alarm ended: The activation alarm can open the video in the specified window. The video stays for the specified time and then restore previous video.
- Display alarm prompt in the video window: The icon  pops in current alarm window when alarm occurs. (On the top left).
- Channel: You can select the activated channel when alarm occurs.
- Window: You can select the monitor window serial number. The activated channel video will be displayed in the specified window.
- Stay time(s): The activated video duration.
- Preset: If current channel connected to the PTZ, and you have set the preset, then system can go to the specified preset once alarm occurs.

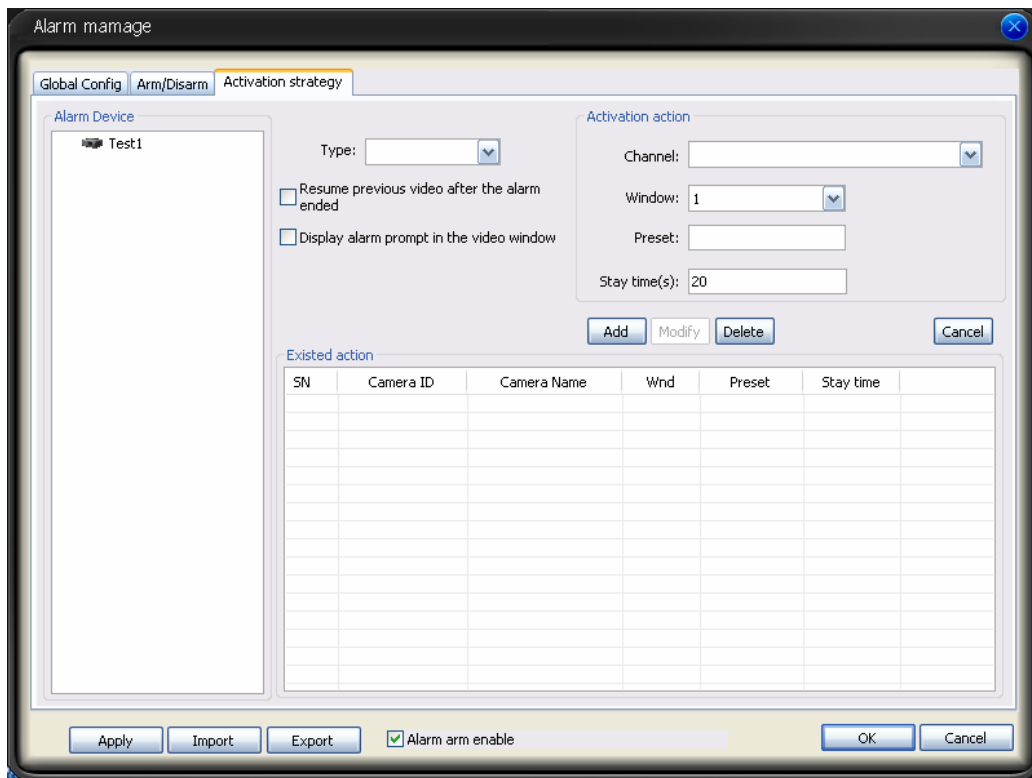


Figure 3-39

3.8.5.4 E-map

System provides three modes to display E-map node: Thumbnail /Device tree/E-map.

If it is you first to use e-map, you need to create one first. Please refer to chapter 3.7.5.2 option for e-map loading path.

The e-map interface is shown as below. See Figure 3-40.

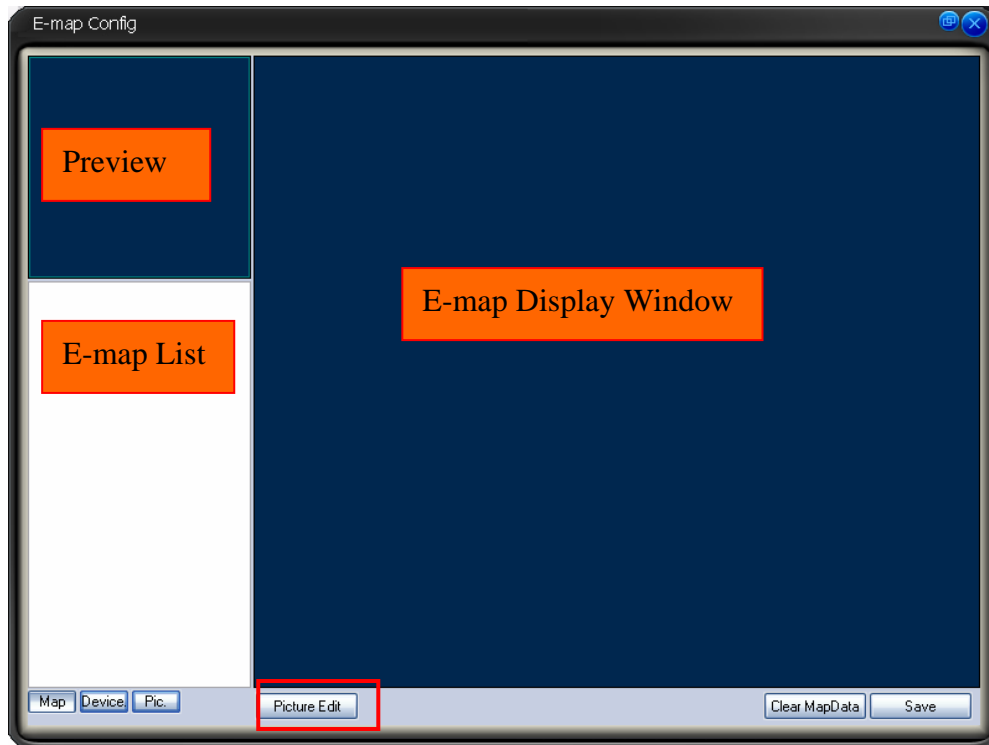


Figure 3-40

In Figure 3-40, click picture edit button, you can see the following interface. See Figure 3-41.

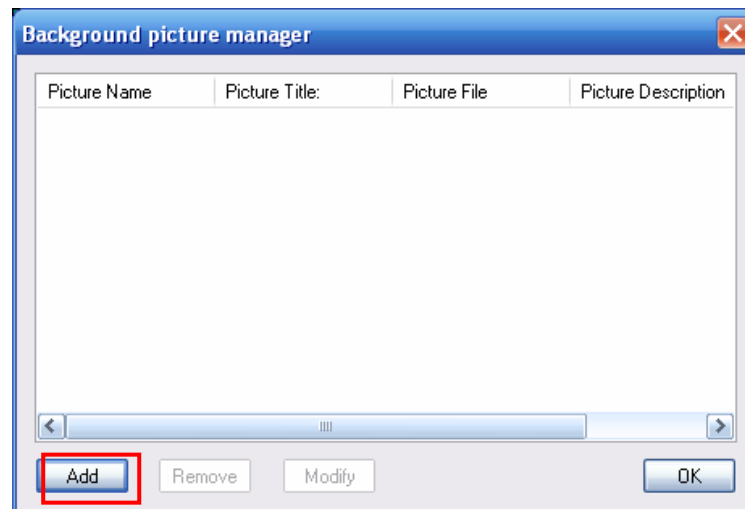


Figure 3-41

Click add button, you can see an interface is shown as in Figure 3-42. Here you can input picture name (such as Shanghai Map), picture description and then select picture path. Please click OK button to save current setup.



Figure 3-42

After you completed the above steps, the interface is shown as below. See Figure 3-43. Please click OK to exit.

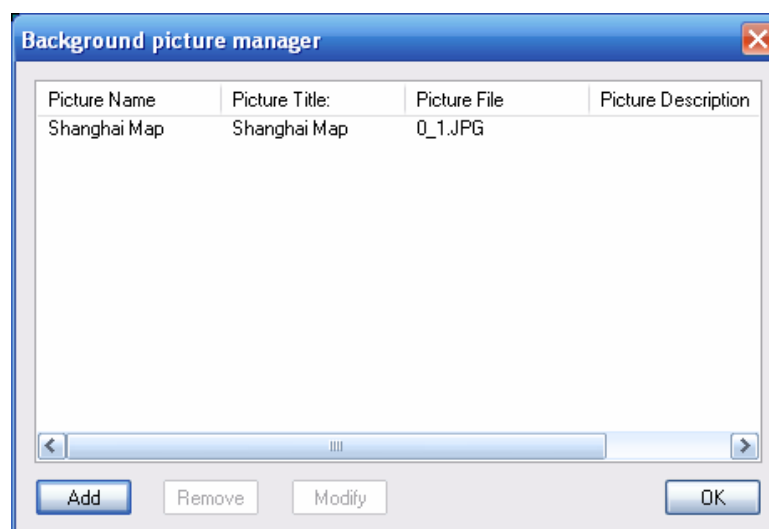


Figure 3-43

Now please click picture button, then you can see you have added an e-map. See Figure 3-44.

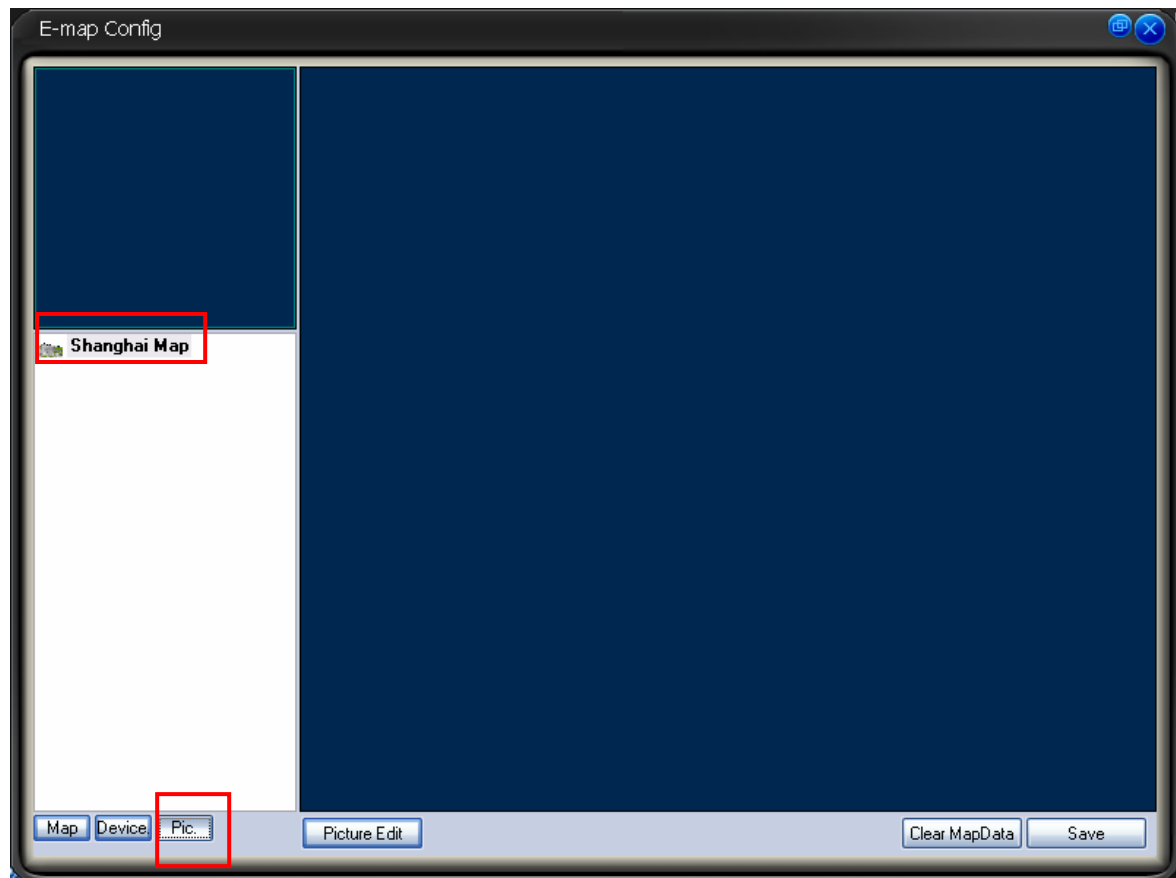


Figure 3-44

In Figure 3-44, left click e-map name and then drag it to the display section. Now you can see an interface is shown as in Figure 3-45.



Figure 3-45

In Figure 3-45 click device button, and then drag the channel number to the e-map and then release. You can see the following interface. See Figure 3-46
You can see you have added a camera in the e-map (CAM4)

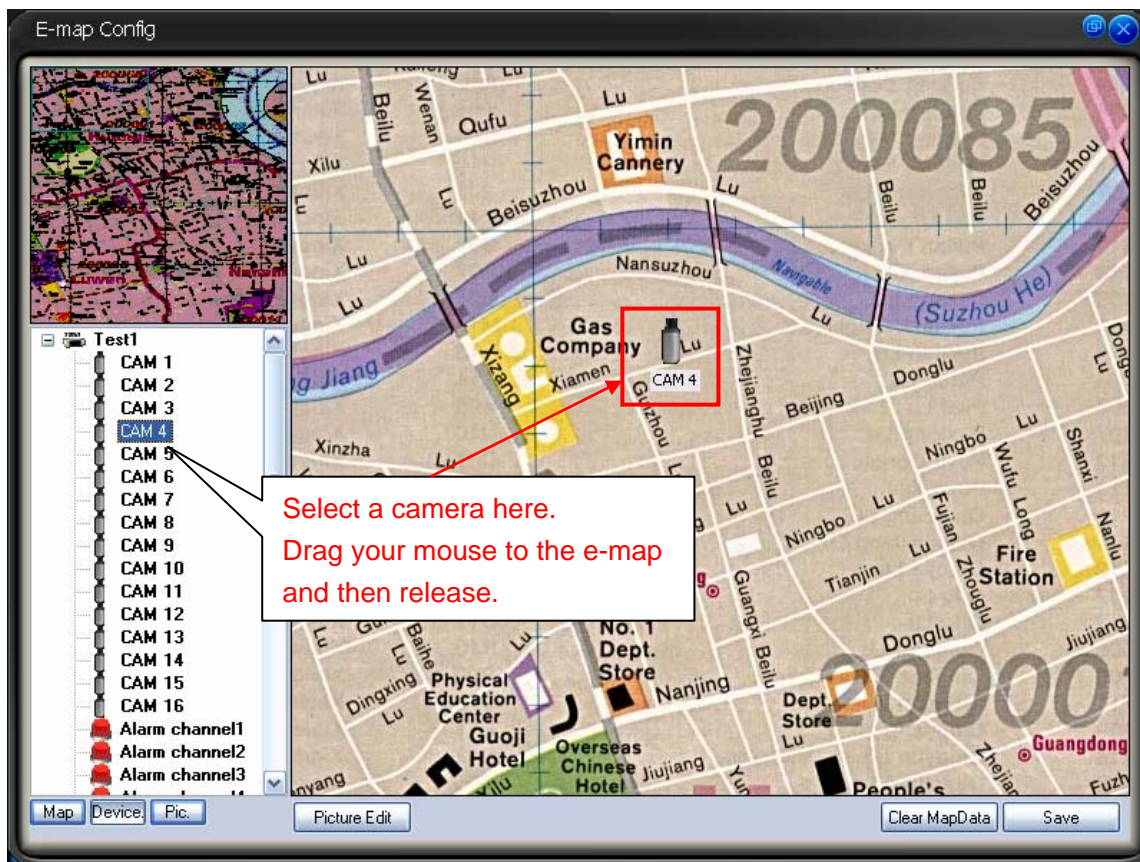


Figure 3-46

Click clear map button, system pops up a dialogue interface. See Figure 3-47.
Click Yes button to remove current e-map.

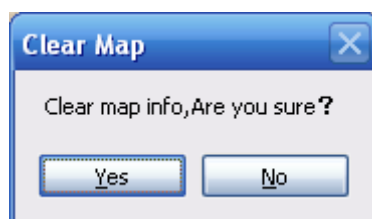


Figure 3-47

Tip:

Move the green rectangle icon in the preview section; you can view different e-map content in display section.

You can repeat the above procedures to add a sub-map.

If you want to implement multiple sub-e-maps setup, you can follow the procedures below:

- Open one map such as map1.
- Click picture button and drag map 2 to anywhere in map1.
- Click map button and click map 2 to open current map
- Double click device name on your right side to add one device to map 2.

- You can view newly added e-map and device list in the map list section.
 - Click save button, now you have added one sub-map and its device.
- Please note, you can not use remove or modify the E-map that you set to use right now.

Camera Property

Right click the camera in the e-map, you can view there are three options: Edit property/property/remove.

Click property button, you can see an interface is shown as in Figure 3-48.

- ID: Camera ID.
- Title: Camera description information
- Type: Camera type.
- Channel: The channel serial number in the device.
- Direction: This item is for general camera. It can be modified. IPC, speed dome and alarm device do not have this item.

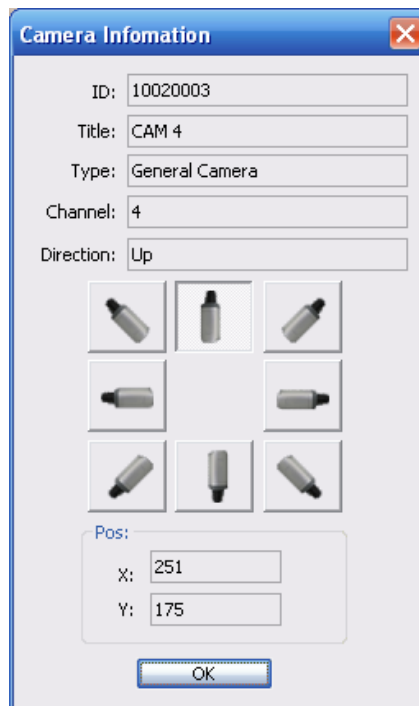


Figure 3-48

Right Mouse Menu

In the e-map or at the e-map no, right click mouse you can see there are some items:

- Edit property: System pops up the property dialogue box. It applies to general camera and the e-map node only.
- Property: system pops up property interface. It is for reference only, you can not modify.
- Remove: Click it to remove the node from current E-map setup.
- Go to sub-e-map: If current e-map is the parent e-map. Select this item you can go to the sub-e-map. Current display window shows the sub-e-map content.
- Go parent: If system is showing sub-e-map content, you can select it to go to parent e-map. Click it, the parent-e-map is displayed in current window

3.8.5.5 Decode Card Configuration

The decode card is one of our series products. The decode card can greatly reduce CPU resources.

Before setup, please make sure you have installed encode card, and you have enabled the “loading decode card when PSS booted up” in the configuration interface. Please refer to chapter 3.7.5.2 for detail information..

The decode card manage interface is shown as in Figure 3-50.

System supports VGA/TV mode switch. Default setup is TV mode.

- Window SN: The video displayed window serial number.
- Displayed SN: It is a decode card TV output serial number. Please note the binding output is not in the dropdown list.
- Binding: Binding decode card TV output serial number and PC video displayed window.
- Zone mode: Display window split mode. (The drop down list may vary according to the different decode card series.) See Figure 3-49.

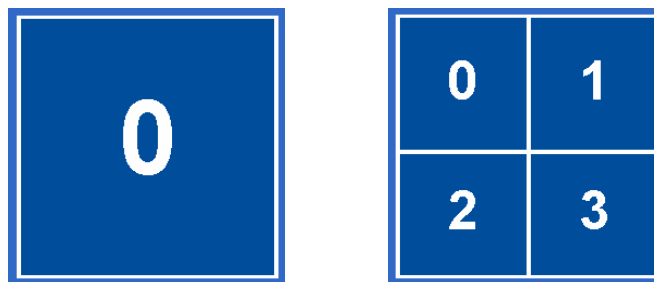


Figure 3-49

When decode card is output, sometimes the image may offset. Please adjust the left and right limit to locate it in the middle. The pan value ranges from 0 to 800 and the tile value ranges from 0 to 600. Please note the limit setup and the brightness setup becomes active immediately!

Decode card information list: Here you can view all decode card available. Please note it is for reference only, you can not modify. You need to reboot to view the latest information.

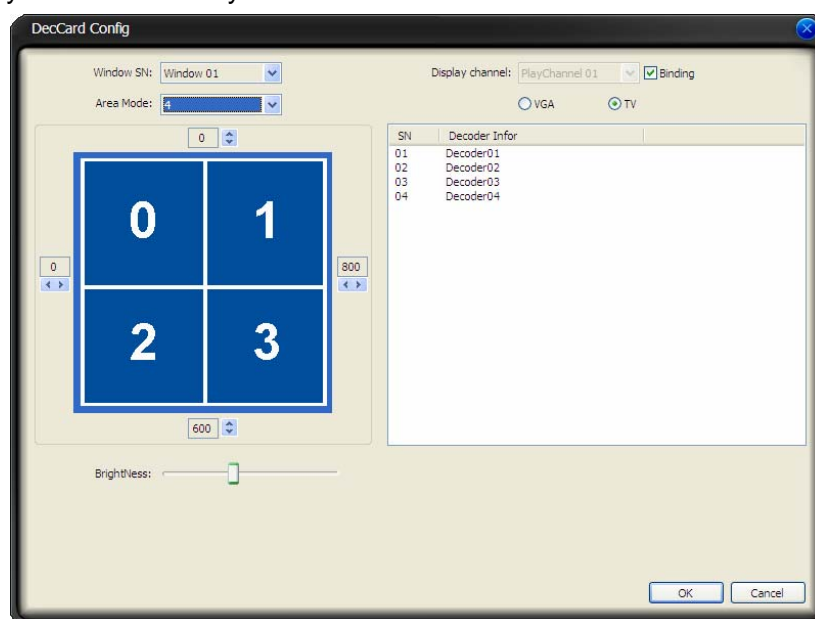
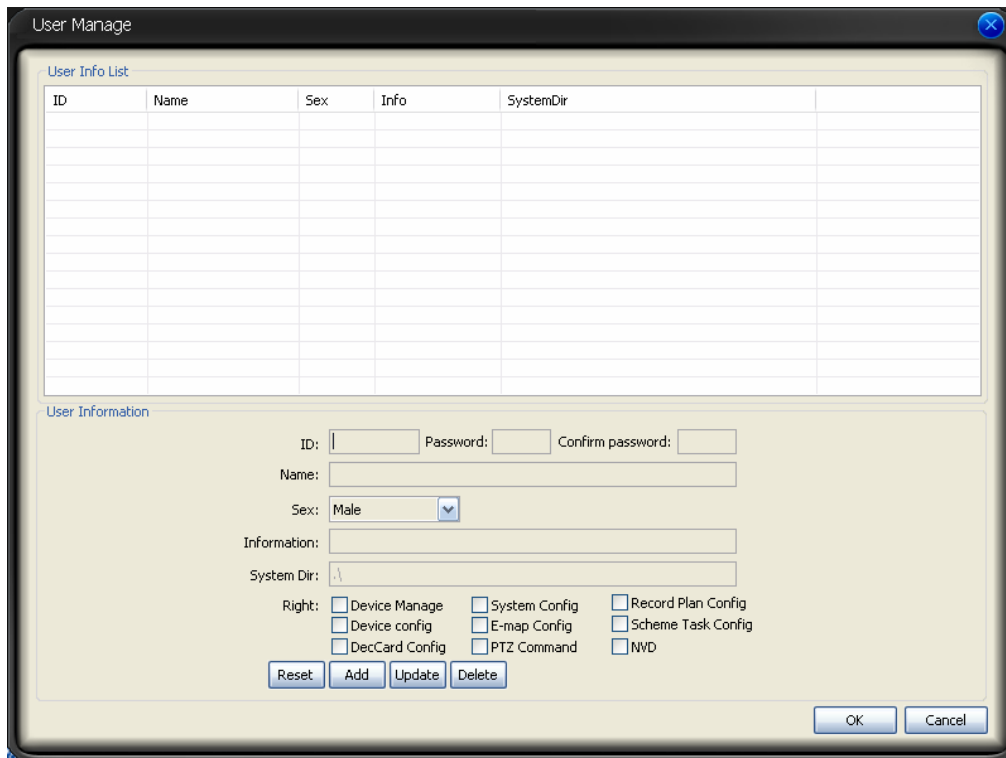


Figure 3-50

3.8.5.6 User Management

User manage interface is shown as below. See Figure 3-51.

- User information list Here you can view all user information.
- ID: The account name you log in the PSS.
- Password: The password you input to log in.
- Confirm password: Please input password again to verify.
- Name: User name information or other.
- Sex: female or male.
- Information User note information.
- System path: Here you can specify use configuration save path.
- Right: You can draw a circle to enable corresponding information.



The 'User Manage' dialog box contains two main sections. The top section, titled 'User Info List', features a table with five columns: ID, Name, Sex, Info, and SystemDir. The bottom section, titled 'User Information', includes input fields for ID, Password, Confirm password, Name, Sex (a dropdown menu currently set to 'Male'), Information, and System Dir. Below these fields is a 'Right:' section with a grid of checkboxes for various configuration options: Device Manage, Device config, DecCard Config, System Config, E-map Config, PTZ Command, Record Plan Config, Scheme Task Config, and NVD. At the bottom of the 'User Information' section are buttons for 'Reset', 'Add', 'Update', and 'Delete'. The entire dialog box has 'OK' and 'Cancel' buttons at the bottom right.

Figure 3-51

Click OK button, system pops up the following dialogue box, please click yes button to save current information. See Figure 3-52.

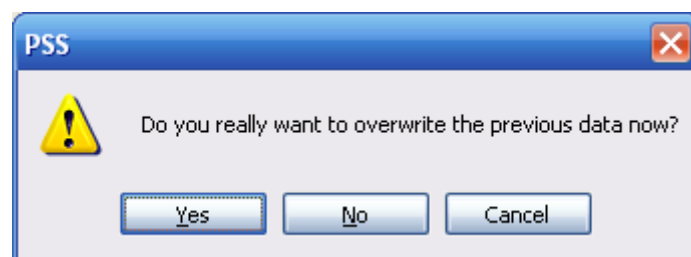


Figure 3-52

3.8.5.7 Device Manager

The device manage interface can be divided into two parts. The device information list part is shown as in Figure 3-53

In the device information list, you can view the added device information.

You can select a user to see different devices since various users have different rights. Admin can view all devices.

- Import/Export: Export current device information to the xml file or import device xml file to current list.

The 'Device Manage' window contains a 'Device Info List' table and a 'Device Information' form.

SN	Title	Desc	DDNS Enable	DDNS IP	DDNS Port
1	10.7.5.14	10.7.5.14	No		
2	10.7.4.27	10.7.4.27	No		

The 'Device Information' form includes the following fields:

- Title: [Text Box]
- Desc: [Text Box]
- ☐ DDNS Enable
- Ip: [Text Box]
- Port: 37777
- Manufacturer: Manufacturer 1 (dropdown)
- Type: DVR (dropdown)
- Model: The second protoc (dropdown)
- User: [Text Box]
- Password: [Text Box]
- Confirm password: [Text Box]
- Login Type: NetWork Type TCF (dropdown)
- Card SN: [Text Box]
- DDNS Server Information:
 - Ip: [Text Box]
 - Port: 7070
 - Device Registration Name: [Text Box]

Buttons: Reset, Add, Update, Delete, OK, Cancel.

Figure 3-53

- Device information: When you select one device in the list, you can view and modify the detailed device information. See Figure 3-54.
- Please note, the user name, password in the following figure (Figure 3-54) are for you to log in the device. It has no relationship with the PSS.
- Card SN: It is for mobile DVR only.

This figure shows a close-up of the 'Device Information' form with the following fields and values:

- Title: [Text Box]
- Desc: [Text Box]
- ☐ DDNS Enable
- Ip: [Text Box]
- Port: 37777
- Manufacturer: Manufacturer 1 (dropdown)
- Type: DVR (dropdown)
- Model: The second protoc (dropdown)
- User: [Text Box]
- Password: [Text Box]
- Confirm password: [Text Box]
- Login Type: NetWork Type TCF (dropdown)
- Card SN: [Text Box]
- DDNS Server Information:
 - Ip: [Text Box]
 - Port: 7070
 - Device Registration Name: [Text Box]

Buttons: Reset, Add, Update, Delete.

Figure 3-54

About DDNS and IP address

If you enabled DDNS function, the IP address information is invalid. That is to say, Figure 3-55 and Figure 3-56 can not be active at the same time.

Please note, in Figure 3-55, you can input IP address such as 10.7.5.11 or you can input domain name such as www.yahoo.com.

Ip:

Figure 3-55

DDNS Server Information:

Ip:

Port:

Device Registration Name:

Figure 3-56

3.8.5.8 NVD Manage

NVD manage interface is shown as in Figure 3-57.

Please refer to chapter 3.8.5.7 for operation information.

[illegible]

Figure 3-57

3.9 Device Health Status

Here you can update device status regularly, view disk health status; decode alarm, record and the alarm information you most concern.

Please go to chapter 3.7.5.2 option to set the alarm information you most concern. See Figure 3-58.



Figure 3-58

Device health status interface is shown as in

Figure 3-59. Please refer to the following sheet for detail information.

SN	Note
1	It is device name and its channel number. In Figure 3-59, you can view the device name is GBE and it has 16 channels.
2	HDD status. In Figure 3-59, HDD is running properly.
3	HDD is full or not. In Figure 3-59, HDD is running properly.
4	Decode or encoder alarm.
5	Device record status. Green light means current channel is recording. Please go to chapter 3.7.5.2 option to set refresh interval.
6	It is the first alarm item you set in Figure 3-58. So, in Figure 3-59, you can see the external alarm information. Red light means there is an alarm. Please go to chapter 3.7.5.2 option to set refresh interval.
7	It is the first alarm item you set in Figure 3-58. So, in Figure 3-59, you can see the external alarm information. Blue light means there is an alarm. Please go to chapter 3.7.5.2 option to set refresh interval.
8	Device IP.

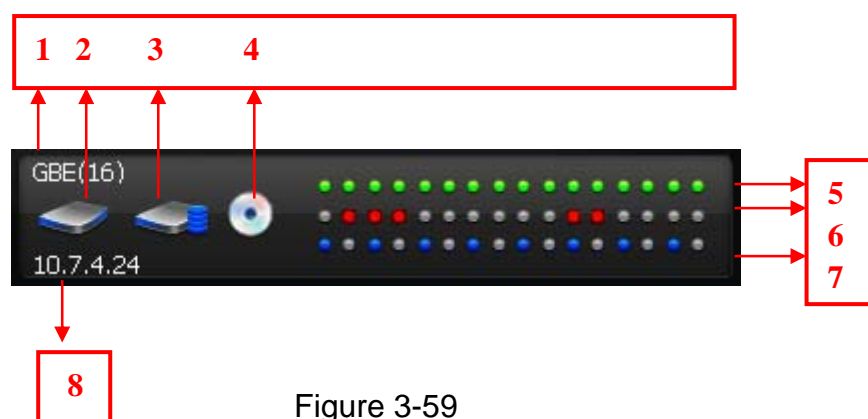


Figure 3-59

In Figure 3-59, double click mouse, you can go to alarm record interface. Please refer to chapter 3.7.2 for alarm record interface information.

Once there are HDD alarm and encode/decode alarm, the interface is shown as below. See Figure 3-60. You can see there is HDD error, HDD is full and the encode/decode alarm.



Figure 3-60

3.10 Full Menu

The full menu interface is shown as below. See Figure 3-61.

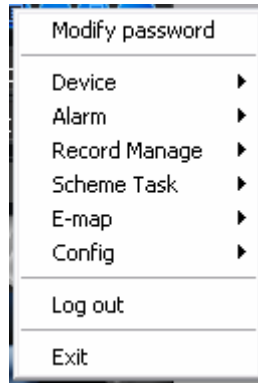


Figure 3-61

3.10.1 Modify Password

Please refer to chapter 3.7.5.1.

3.10.2 Device

It has the following sub-menu. See Figure 3-62.

- Device management: Please refer to chapter 3.8.5.7.
- Health report: Please refer to chapter 3.8.4.3.
- NVD manage: Please refer to chapter 3.8.5.8.
- NVD control: Please refer to chapter 3.8.4.2.
- Decode card configuration: Please refer to chapter 3.8.5.5.

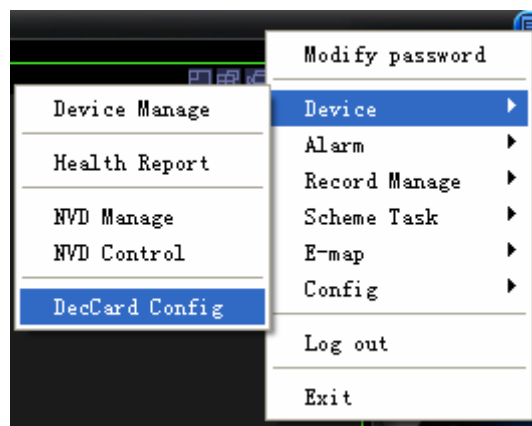


Figure 3-62

3.10.3 Alarm

It has the following sub-menu. See Figure 3-63.

- Alarm management: Please refer to chapter 3.8.5.3
- Valid: It means current alarm setup is valid or not.

- Motion detection, video loss, camera masking, and external alarm: You can draw a circle to enable it. Please refer to chapter 3.8.5.3

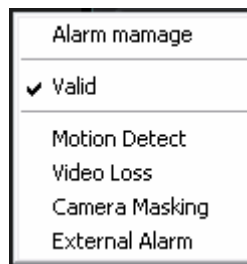


Figure 3-63

3.10.4 Record Manage

It has the following sub-menu. See Figure 3-64.

- Record plan configuration: Please refer to chapter 3.8.5.2.
- Start /Stop: You can enable/disable record plan.
- Playback Please refer to chapter 3.7.3.

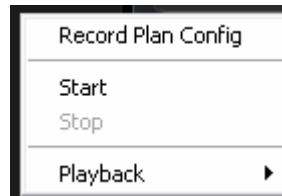


Figure 3-64

3.10.5 Scheme Task

It has the following sub-menu. See Figure 3-65.

- Scheme task configuration: Please refer to Chapter 3.8.5.1.
- Pause/Restore: You can click it to pause or restart task/project.
- Task1/Project1: You can draw a circle to enable current task/project.

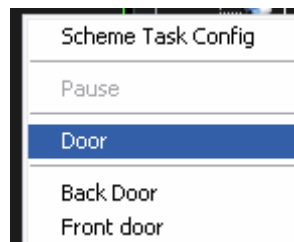


Figure 3-65

3.10.6 E-map

It has the following sub-menu. See Figure 3-66.

- E-map configuration: Please refer to Chapter 3.8.5.4.
- E-map view: Please refer to Chapter 3.7.4.

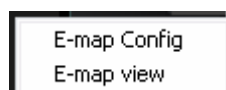


Figure 3-66

3.10.7 Configuration

It has the following sub-menu. See Figure 3-67.

- Option: Please refer to Chapter 3.7.5.2.
- Alarm management: Please refer to Chapter 3.8.5.3.
- Record plan configuration: Please refer to Chapter 3.8.5.2.
- Scheme task configuration: Please refer to Chapter 3.8.5.1.
- E-map configuration Please refer to Chapter 3.8.5.4.
- Device management: Please refer to Chapter 3.8.5.7.
- NVD management: Please refer to Chapter 3.8.5.8.
- User management: Please refer to Chapter 3.8.5.6.

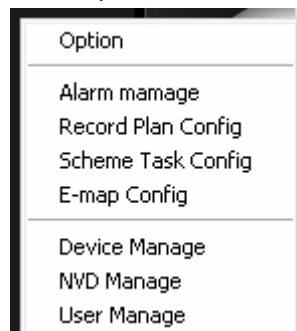


Figure 3-67

3.10.8 Log out

Select it, you can exit current operation, system goes back to login interface. You need to input user name and password to log in. Please refer to chapter 3.1.

3.10.9 Exit

Click exit button, system pops up the following dialogue box. See Figure 3-68.

Click OK button to exit PSS.

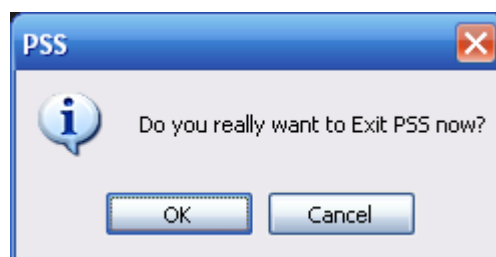


Figure 3-68

3.11 Tray Menu

Click tray menu, it is shown as in Figure 3-69. See Figure 3-69.

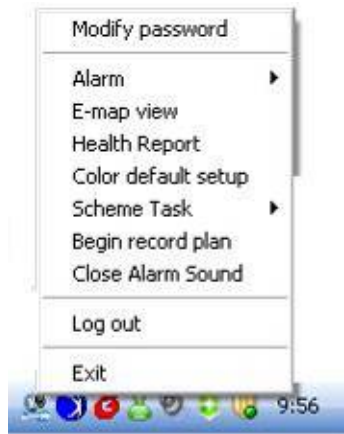


Figure 3-69

3.11.1 Modify Password

Please refer to chapter 3.7.5.1.

3.11.2 Alarm

It has the following sub-menu. See Figure 3-67.

Please refer to Chapter 3.10.1.3.

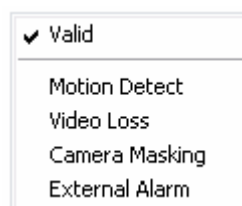


Figure 3-70

3.11.3 E-map View

Please refer to chapter 3.7.4.

3.11.4 Health Report

Please refer to chapter 3.8.4.3.

3.11.5 Color Default Setup

Please refer to chapter 3.8.4.4.

3.11.6 Scheme Task

It has the following sub-menu. See Figure 3-71.

Please refer to chapter 3.10.1.5.

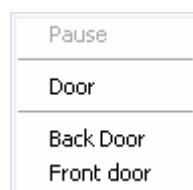


Figure 3-71

3.11.7 Begin/Stop Record Plan

You can click it to enable/disable current record plan.

3.11.8 Close Alarm Sound

Please refer to chapter 3.8.4.5.

3.11.9 Log out

Please refer to chapter 3.10.1.8.

3.11.10 Exit

Please refer to chapter 3.10.1.9.

4 Operation Instruction

4.1 Monitor Operation

Please follow the steps listed below to realize monitor operation.

1. Please add the monitor device to the device list. Please refer to chapter 3.8.5.7.
2. In the device list, right click mouse to log in the device. For your convenient, you can go to the chapter 3.7.5.2 to enable auto log in all devices when PSS boots up.
3. Select channel number and then drag it to the corresponding window (or you just double click channel number), you can view real-monitor video. Please note, current window has a green boundary.

Please note, the camera name is the same with the device channel name setup. You can right click device name and then select advanced->device configuration item to modify channel name. You need to log in again to activate current setup.

4. You can refer to chapter 3.6 to adjust screen display mode. Drag the screen window and then release, you can adjust displayed position. Please note, you can not adjust decode card sequence.
5. You can refer to chapter 3.5 for video tool information.



Figure 4-1

Please go to chapter 3.7.5.2 for full screen hot key setup.



4.2 Monitor Task and Monitor Project

1. Please refer to chapter 3.8.5.1 to establish task and project.
2. Please refer to chapter 3.7.1 to enable monitor task and monitor project.


4.3 PTZ Control

Before operation, please make sure current channel supports PTZ control.

Select step and then use the 8 direction buttons, you can realize PTZ control.

You can click the 3D intelligent positioning button to realize 3D intelligent positioning function.

Please note, during the whole process, other buttons are all invalid.

Click the lock icon , the PTZ interface becomes independent and can overlay the specified screen as you desire.

You can go to chapter 3.7.5.2 for hotkey setup.



For detail operation information, please refer to chapter 3.8.2 and chapter 3.8.3.



Figure 4-2

4.4 Playback

4.4.1 Device Record Playback

1. Please log in the device you want to search.
2. Click playback button
3. Select the device name and then select selected channel.
4. Select record type: Record/Alarm/Motion detection/card number.
5. Set search period or cad number.
6. Click search button.
7. You can draw a circle to select the corresponding result and then click download button to download to the local end.
8. Select one video window and then double click search result, you can playback the record.

4.4.2 Local Record Playback

1. Click playback button.
2. Select local record
3. Select the device name (if you want to search all devices, you can select unknown.). Then you can select channel number.
4. Select the record type: Record/Alarm/Card number and others.
5. Set search period or cad number.
6. Click search button.
7. In the searched results, click remove button you can delete local record. Select one video window and then double click search result, you can playback the record.

4.4.3 Download

Select the file(s) you want to download and then click download button.

During the download process, you can click cancel button to terminate current operation.

The download files information is automatically added to the local record. You can search from the local record.

Please note, the download process will pause if current channel is playback device record/ The download resume after playback completes.

4.4.4 Record Play Control

System maximally supports 4-ch playback.

Please refer to chapter 3.7.3 for playback information.

Double click video window you can adjust display mode.

You can enable snapshot function during playback.

4.4.5 Others

Please refer to chapter 3.7.3 for playback information.

Record playback can download the specified record to the local end.

The download files information is automatically added to the local record. You can search from the local record.

4.5 Snapshot and Manual Record

In real-time monitor or playback mode, you can enable snapshot or manual record function.

Please click snapshot to save current image to specified path.

You can click manual record button to enable recode function. Click it again, you can stop manual record.

The snapshot file or manual recorded file is automatically added to the local record. You can search to playback.

4.6 E-map

Please go to chapter 3.8.5.4 to establish E-map.

Please go to chapter 3.7.4 to view the detail e-map information.

E-map window can be displayed independently.

Double click the camera name in the E-map; you can enable real-time monitor function in the video window.

When alarm occurs, corresponding node becomes flashing.

4.7 Log out

Please refer to chapter 3.10.8 or chapter 3.11.9 for log out information.

System goes back to log in interface. Current operation and configuration all stopped. You need to input user name and password to log in. The record plan, task and project, shortcut key, and right are all for logged in user.

Click OK button to exit PSS.



Figure 4-3

5 Peripheral Device Operation

5.1 Decode Card

The decode card is one of our series product. The decode card can greatly reduce CPU resources.

Before setup, please make sure you have installed encode card, and you have enabled the “loading decode card when PSS booted up” in the Option interface (chapter 3.7.5.2).

The decode card can output video to the TV or VGA device. You can just select the video channel and then drag it to the decode card binding monitor channel.

For decode card configuration operation, please refer to chapter XXX.

5.2 NVD

5.2.1 Menu

NVD is a network video decoder. It is one of our series products. It can connect to the video sourcing device. It has TV output and TV video split.

You can go to the NVD manage interface from the right tool button. See Figure 5-1.

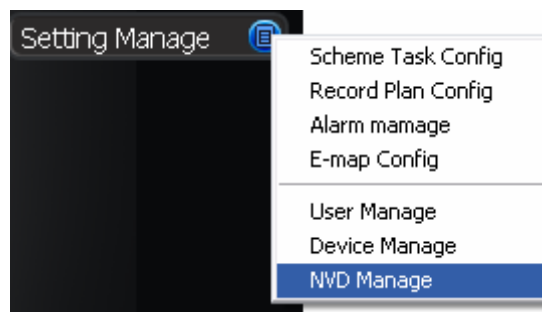


Figure 5-1

NVD is a network device, you need to add NVD device first and then use it.

Please refer to chapter 3.8.5.7 for NVD device manage

Please refer to chapter 3.8.4.2 for NVD control operation.

5.2.2 NVD Control Principle

Please read the following principles so that you can understand how the PSS control the NVD.

- PSS log in NVD and then control NVD.
- PSS transfer the device information and channel information to the NVD and then NVD can log in the other devices to enable video.
- PSS control NVD to enable video and split video
- NVD can output the video data after split. (The data here can be the input video of the other device.)
- NVD has four video outputs and each video output can integrate video from four channels to a four-channel video window.
- Please note you need to log in the NVD if you want to use it.

NVD operation consists of three sections: operation, search and tour. All the operations become active when NVD is running normally.

On the top left, you can view the added NVD device. On the top button, you can view other video sourcing devices.

Remotely control the NVD to open the video and then switch the split mode. The operation is the same as the general video zone. But the video window only displays current connected device IP and channel serial number, the NVD video is not in the window. See Figure 5-2.



Figure 5-2

If you see the following dialogue box, you can see the NVD has reached the max decode capacity. See Figure 5-3.



Figure 5-3

Please close the video channel, until you see the following dialogue box. See Figure 5-4. Now the NVD has restored capacity and can run properly.

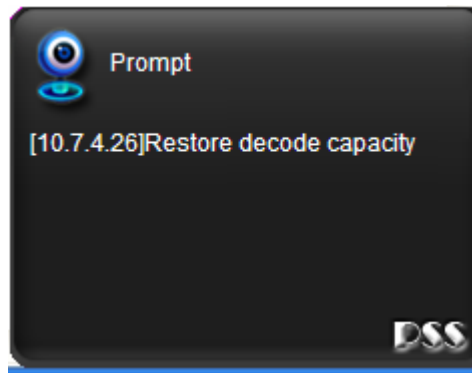


Figure 5-4

5.2.3 Audio talk

This function is for G6 special series only.

The audio talk is the audio transmission between the video sourcing device and NVD.

In the NVD interface, right click mouse to open the channel window. System pops up the audio encoded mode system supported, you can select to enable audio talk mode. See Figure 5-5.

Please note if the video sourcing device and NVD has no common audio encode mode, then the audio talk function can not be enabled.

Note: One device support one audio function only.



Figure 5-5

Search: You can click search button to view NVD window split mode and each video sourcing information. Channel and sub-window are NVD information. IP, port, user and video channel are video sourcing information. See Figure 5-6.

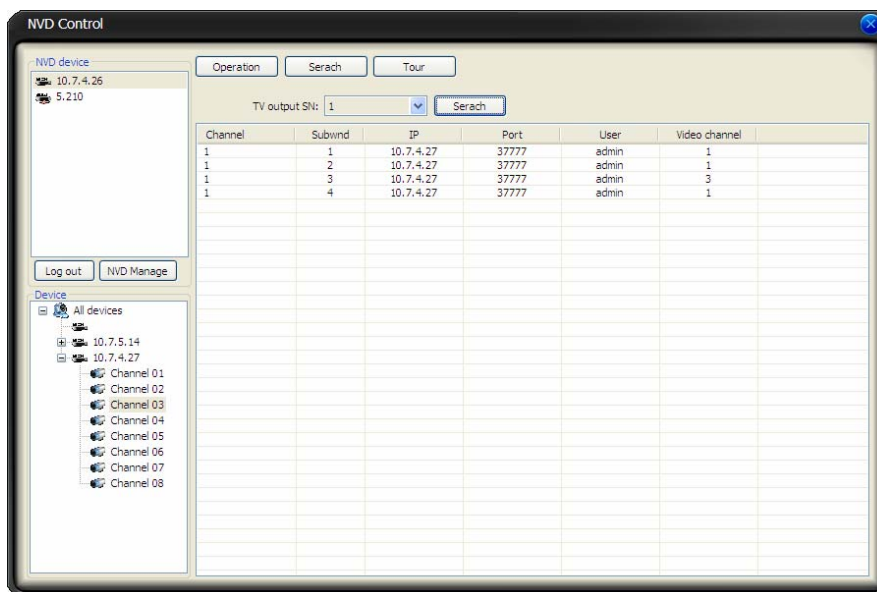


Figure 5-6

Tour: Remotely control NVD to distribute the video sourcing to realize remote tour function (TV output).

Video mode: Now system supports 1/4 window split. Double click one video window, you can switch video display mode, it can display in the NVD output device immediately. See Figure 5-7.



Figure 5-7

Select channel: for 1-window split, there is only one channel. And for four-window split, there are four channels available.

Add: You can add new tour setup to the NVD tour plan. See Figure 5-8.

Remove/remove all: You can delete the NVD tour plan.

Tour: Click this button to enable NVD tour.

Please note, the add/delete operation only becomes valid when the NVD connection is OK.

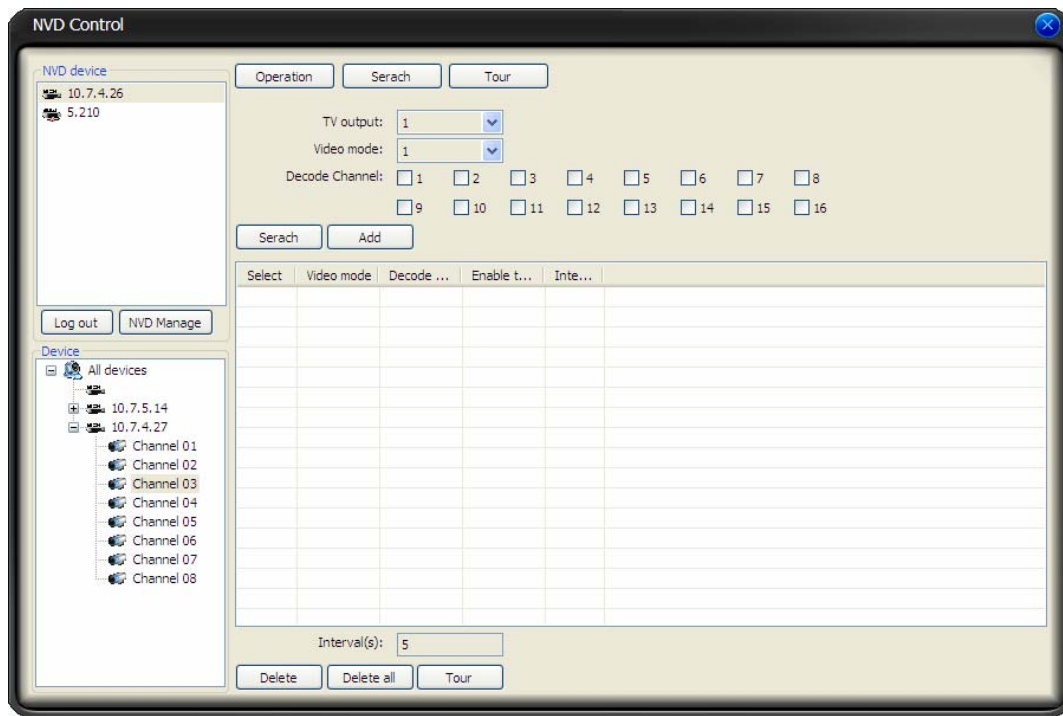


Figure 5-8

Note:

- Slight difference may be found in the user interface.
- All the designs and software here are subject to change without prior written notice.
- Please visit our website for more information.